

Right up your Street

Streets product & services to support local government

Richard Groombridge & Hazel Kamuriwo

May 2023

Street Products & Services

WORKING WITH US

Traffic Sensitivity Review Service

A current traffic sensitive network is crucial in identifying highly trafficked highways that works or activities in these streets are likely to be particularly disruptive to other road users.

[FIND OUT MORE](#)



STREET WORKS MANAGERS

View SWA Codes

Download and view the SWA data capture code list for use in the street works coordination process.

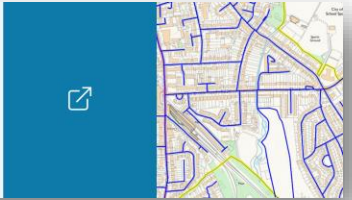


EXTERNAL LINK

Visit FindMyStreet

FindMyStreet will show you every street that's recorded in the National Street Gazetteer. The service will tell you where a street can be found, what its official name is, and who's responsible for maintaining that street.

[GO TO FINDMYSTREET](#)



WORKING WITH US

Working with us


How can we help you? A current traffic sensitive network is crucial in identifying highly trafficked highways that works or activities in these streets are likely to be particularly disruptive to other road users.

Expertise

The GeoPlace team has extensive experience in providing expert advice and support to local authorities, helping them to plan and manage their street works activities. We offer a range of services to help you to plan and manage your street works activities, including:

- Traffic Sensitivity Reviews
- Street Works Management
- Lane Rental Schemes
- Permit Scheme Implementation

[CONTACT US](#)



Local authority resources

Street Works Management

Guidance for Custodians

- Data capture manual
- Case studies
- The value of data
- How it's used
- Calculator guidance

Support for Custodians

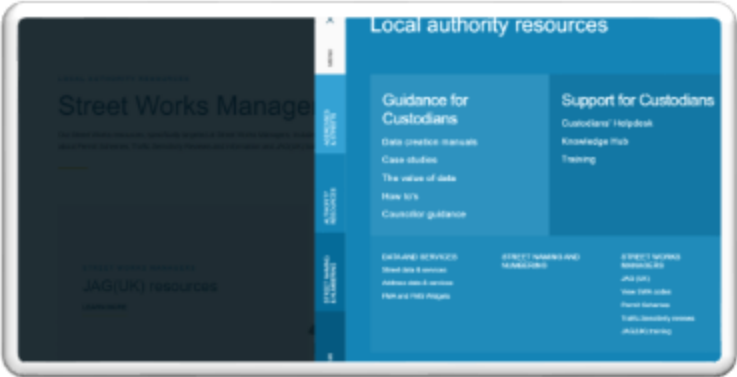
- Custodians' Helpdesk
- Knowledge Hub
- Training

EXPLAINED SERVICES

- Street data & services
- Address data & services
- PAN and POI Mapping

STREET WORKS AND MANAGEMENT

- SWA Data
- Street Data Capture
- Street Works Management
- Public Consultation Services
- JAGUK Training



STREET DATA AND SERVICES

DataVia API

Add the National Street Gazetteer's detailed street data to your GIS, web or mobile applications with ease and create location-based decisions with confidence.



How we can help you

WORKING WITH US

Moving to a Lane Rental Scheme

We have successfully introduced and evaluated permit schemes ensuring we have the experience and knowhow to help authorities to move to a Lane Rental Scheme.


[FIND OUT MORE](#)

IMPLEMENTATION AND EVALUATION

Permit Scheme - Implementation

The Joint Authorities Group (JAGUK) works on behalf of local authorities to promote excellence in road network and traffic management right across the UK. With the support of GeoPlace, the NDS, and other partners, JAGUK has put together a comprehensive package to help you prepare, consult on and implement a permit scheme for your authority.

[DOWNLOAD IMPLEMENTATION DOCUMENT](#)



Traffic Sensitive Street review

Government response

The government has decided to proceed with this proposal and amend regulations to remove the criteria: 'is designated by the HA as part of its winter maintenance programme'; 'is on a tourist route or within an area where major events take place'; and 'is covered by a congestion charge'. This change will come into force in April 2023 and will mean that a road cannot be designated as traffic sensitive if the only reason it was classed as such was for one of those reasons.

We will work with HAUC on a corresponding update to statutory guidance and will include in this, advice on what that means for HAs reviewing and updating their traffic sensitive designations for the roads that may be caught by this change.

HAs should note that routes that may no longer be designated as traffic sensitive will still be covered by their permit scheme, and permits can be used to control when works take place and the working times.

DOWNLOAD

Traffic Sensitive Streets guidance notes

Traffic Sensitive Streets play a vital role in street works coordination. They need to be reviewed regularly. These guidance notes provide details on how to interpret the NRSWA Code of Practice, ensuring all of the right information is collected about your Traffic Sensitive Streets.

TITLE

JAG-UK-Traffic-Sensitivity-guidance-notes.pdf

SIZE

195.34 KB

UPLOADED

4 June 2020

JAG UK TR
GUIDANCE



USRN	Street Description	Locality	Town	Road Number	Current Days	Proposed Days	Current Times	Proposed Times
82640510	A1036 JUNCTION WITH A64	COPMANTHORPE	YORK	A1036	[Weekends]	[Everyday]		[[All Day]]
45800309	ACOMB ROAD	HOLGATE	YORK	B1224	[Weekends]	[Saturday, Working Days]	[[07:30, '09:15'], [16:00, '18:00']]	[[All Day]]
45800334	ASKHAM LANE	WESTFIELD	YORK	C285	[Everyday]	[Saturday, Working Days]	[[07:30, '09:15'], [16:00, '18:00']]	[[07:00, '18:00']]
45801176	BARBICAN ROAD	GUILDHALL	YORK	A19	[Weekends]	[Saturday, Working Days]	[[07:30, '09:15'], [16:00, '18:00']]	[[All Day]]
45800360	BECKFIELD LANE	ACOMB	YORK	C413	[Weekends]	[Saturday, Working Days]	[[07:30, '09:15'], [16:00, '18:00']]	[[All Day]]
45801192	BISHOPGATE STREET	BISHOPHILL	YORK	A1036	[Everyday]	[Saturday, Working Days]	[[07:30, '09:15'], [16:00, '18:00']]	[[All Day]]
45801044	BISHOPTHORPE ROAD	YORK	YORK	C289	[Weekends]	[Everyday, Saturday, Working Days]	[[07:30, '09:15'], [08:00, '19:00'], [16:00, '18:00']]	[[All Day]]
45800378	BLOSSOM STREET	BISHOPHILL	YORK	A1036	[Weekends]	[Saturday, Working Days]	[[07:30, '09:15'], [16:00, '18:00']]	[[All Day]]

FindMyStreet

Created in partnership with

geoplace[®] Local Government Association

FindMyStreet

Home Map List of Streets About FAQs FindMyAddress


SHOWING THE NATIONAL STREET GAZETTEER FOR ENGLAND & WALES

FindMyStreet

FindMyStreet shows every street in England and Wales that's held in the [National Street Gazetteer](#). It will tell you where a street is, what its official name is, and the maintenance responsibility of that street. The data is created and maintained by local authorities, collected, and managed centrally by [GeoPlace](#).

Find out more about FindMyStreet [here](#).

SEARCH



Case Study

Leicestershire County Council use FindMyStreet to aid with the Classification of Streets

FindMyStreet is a service that shows every street in England and Wales that is held in the National Street Gazetteer. It highlights where a street is, what its official name is, and the maintenance responsibility of that street. The data is created and maintained by local authorities and is collected and managed centrally by GeoPlace.



Related Content

[Street data & services](#)

[Full list of streets services](#)

[FindMyStreet](#)

The benefits and outcomes

Using FindMyStreet classifications has reduced the number of enquiries seeking classification information from the council, from around 10 per day, to now only a few per month. This has been achieved by linking the council's own website along with those of the relevant local planning authorities to FindMyStreet. It has also saved resources within the council's Digital Services Team, as there is no longer a need for Leicestershire County Council to publish this information on its own website.

Product Roadmap

Improved data currency

Improved search functionality

Boundaries (Ward & LHA)

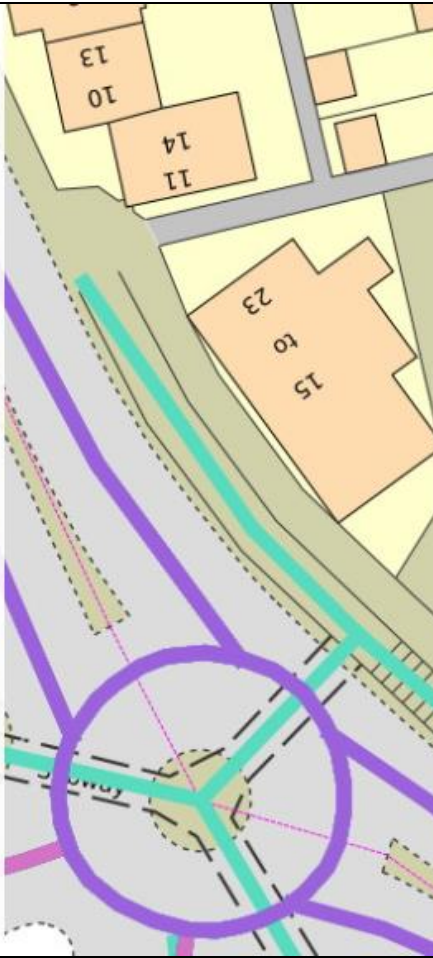
DELIVERING THE MOST AUTHORITATIVE STREET DATA FOR ENGLAND & WALES VIA API

DataVia API

Add the National Street Gazetteer's detailed street data to your GIS, web or mobile applications with ease and make location-based decisions with confidence. DataVia delivers a complete network of streets combined with a lot of important detail, in England and Wales that's held in the [National Street Gazetteer](#).

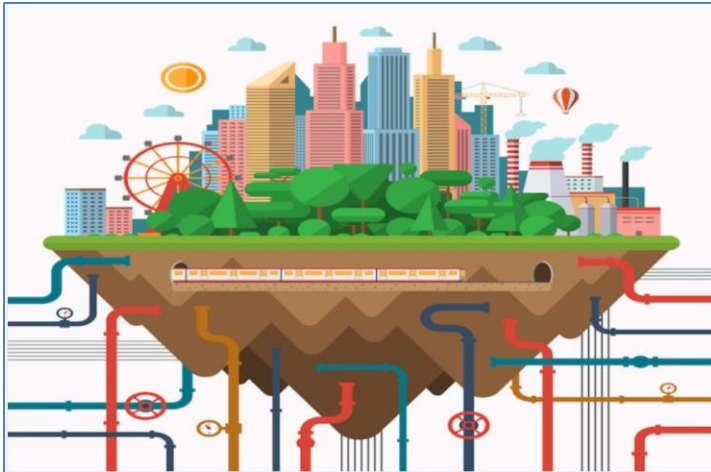
Using DataVia, you can:

- See the most authoritative information about streets including geographical identifiers (Street name, town, locality)
- Find all streets within a defined area
- See additional Street data - Traffic sensitivity, Special Engineering Difficulty, Maintenance Responsibility, Information about construction - plus a lot more
- Find out information on access, use and restrictions

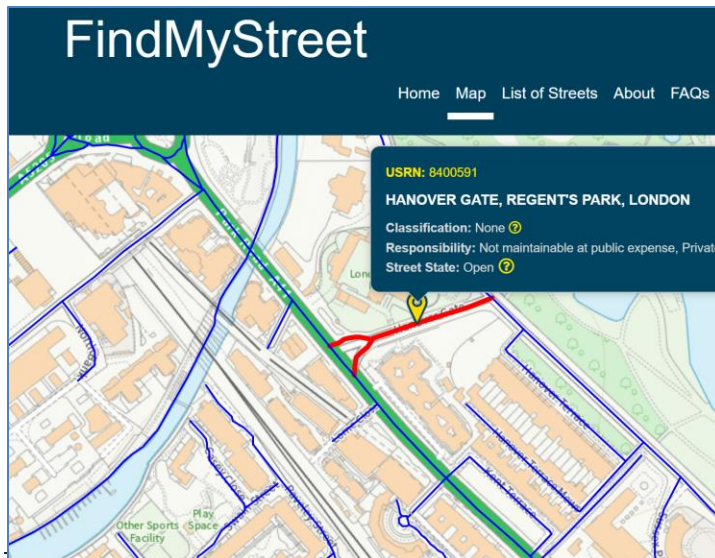


Why a Streets API service?

Meeting changing needs of the Industry



Increase access and use of the local authority data



What data is available?



 **Main road**
USRN
63820718

- Lifecycle/State
- Street Name or Descriptions
- Geographical Identifiers
- Geometry of the Street
- Classifications (M/A/B/C)
- Dedication (Access & Use) rights
- Maintenance responsibility
- Street construction
- Traffic sensitive streets
- Transport assets
- Underground assets
- Level crossing safety zones
- Public Rights of Way
- TRO information (Parking, Turn & Speed)
- One way exemptions,
- Street Surface

Product Roadmap

Local Authority Roll out



Improved data currency

Improved representation of ASD

Street Change Intelligence

Use Cases

“I found the API very helpful for Classification differences task from Geoplace recently. I made a custom symbology which was a very good visual help for understanding current road classification and resolving classification differences between our NSG and OS.”

“We have made the API available through our internal GIS meaning more people in our authority have access to this information.”

“Using DataVia we've been able to get our data in an easy format that we've publish internally on our web mapping.
We're hoping that by making Street and ASD data more visible within our authority, it will increase our reach and engagement.”

Richard.groombridge@geoplace.co.uk

Hazel.Kamuriwo@geoplace.co.uk

