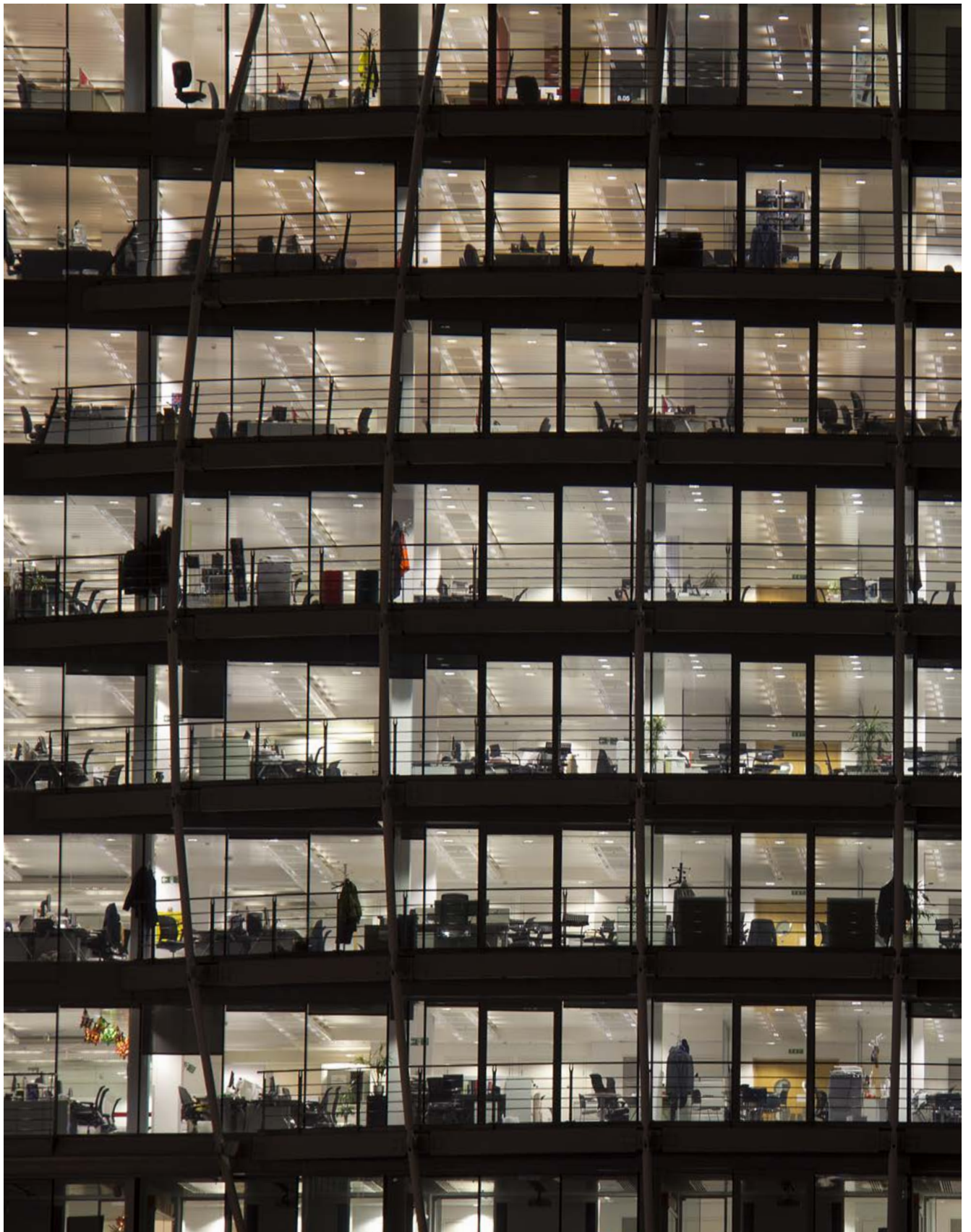




Helping you collect and retain your Business Rates





Helping you collect and retain your Business Rates

WE WORK WITH YOU TO ANALYSE YOUR DATA
AGAINST TRUSTED EXTERNAL SOURCES AND
PROVIDE A TARGETED REPORT ON PROPERTIES
IN YOUR AUTHORITY MISSING FROM YOUR
BUSINESS RATES REGISTER.

Whether as a result of fraud or error, we will help identify gaps in the collection of non-domestic rates which will result in an improved rating list for your authority.

This will help you find and retain money to fund your local services.

Data analytics as a service

Working with your business rates team and Local Land and Property Gazetteer Custodian we use data analytics to derive an informed list of businesses absent from your ratings list.

Our understanding of property data provides a robust evidence base for decision making, minimizing the number of false positives to reduce the cost of investigating potential fraud and error.

We apply our expertise to save you time and money.

Why use our service?

WE ARE EXPERTS IN DATA MANAGEMENT AND ANALYTICS

We understand data; the compilation of your business rates register and data from the Valuation Office Agency. We work with VOA data on a weekly basis, matching it to the National Address Gazetteer.

We already work under contract with every council in England and Wales

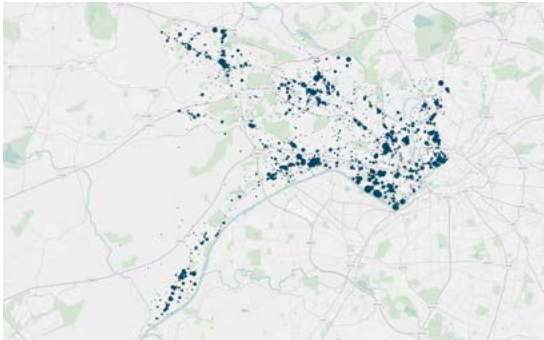
We deliver a cost-effective solution providing you with qualified leads to reduce officer time

Our service improves the overall quality of your data.

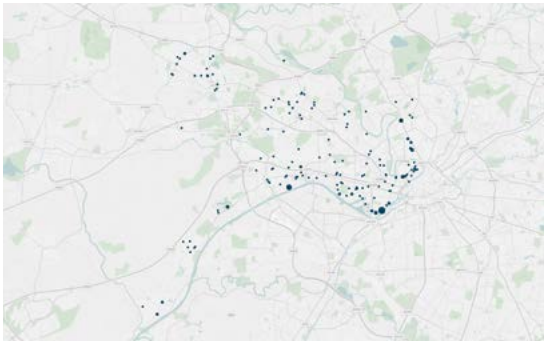
Our service is supported by the Local Government Association (LGA) and The Chartered Institute of Public Finance and Accountancy (CIPFA)



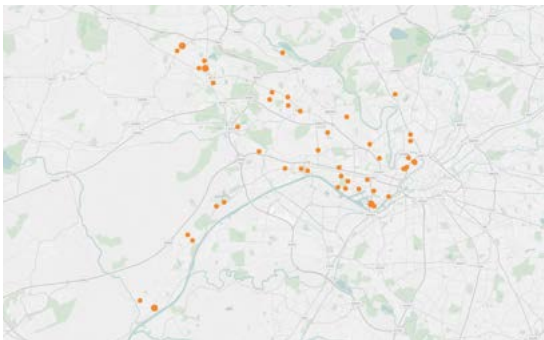
Case study: Salford City Council



NDR data, geocoded and plotted to postcode level



Records provided to Salford for review



Records taken forward by Salford for investigation

GEOPLACE WORKED WITH SALFORD CITY COUNCIL TO REVIEW THEIR NON-DOMESTIC RATINGS LIST WITH A VIEW TO IDENTIFYING PROPERTIES THAT WERE MISSING THAT COULD BE LIABLE TO PAY RATES.

GeoPlace analysed Salford's NDR list and flagged 97 properties for review at a joint one-day workshop. In this workshop, Salford used their local knowledge and access to data held in internal systems - which for data protection reasons they had not been able to share with GeoPlace. We found that 47 of these records were accepted to be investigated and 8 were 'maybes' requiring further desk based investigation which Salford wanted to undertake outside of the workshop. The remaining 43 properties were already represented in some way in their ratings list. In each case Salford agreed it was reasonable for these records to be in the report as they could only be ruled out with local knowledge and data.

By undertaking an intensive data analytics exercise prior to holding an internal workshop, our approach is to minimise the number of properties that require additional investigation.

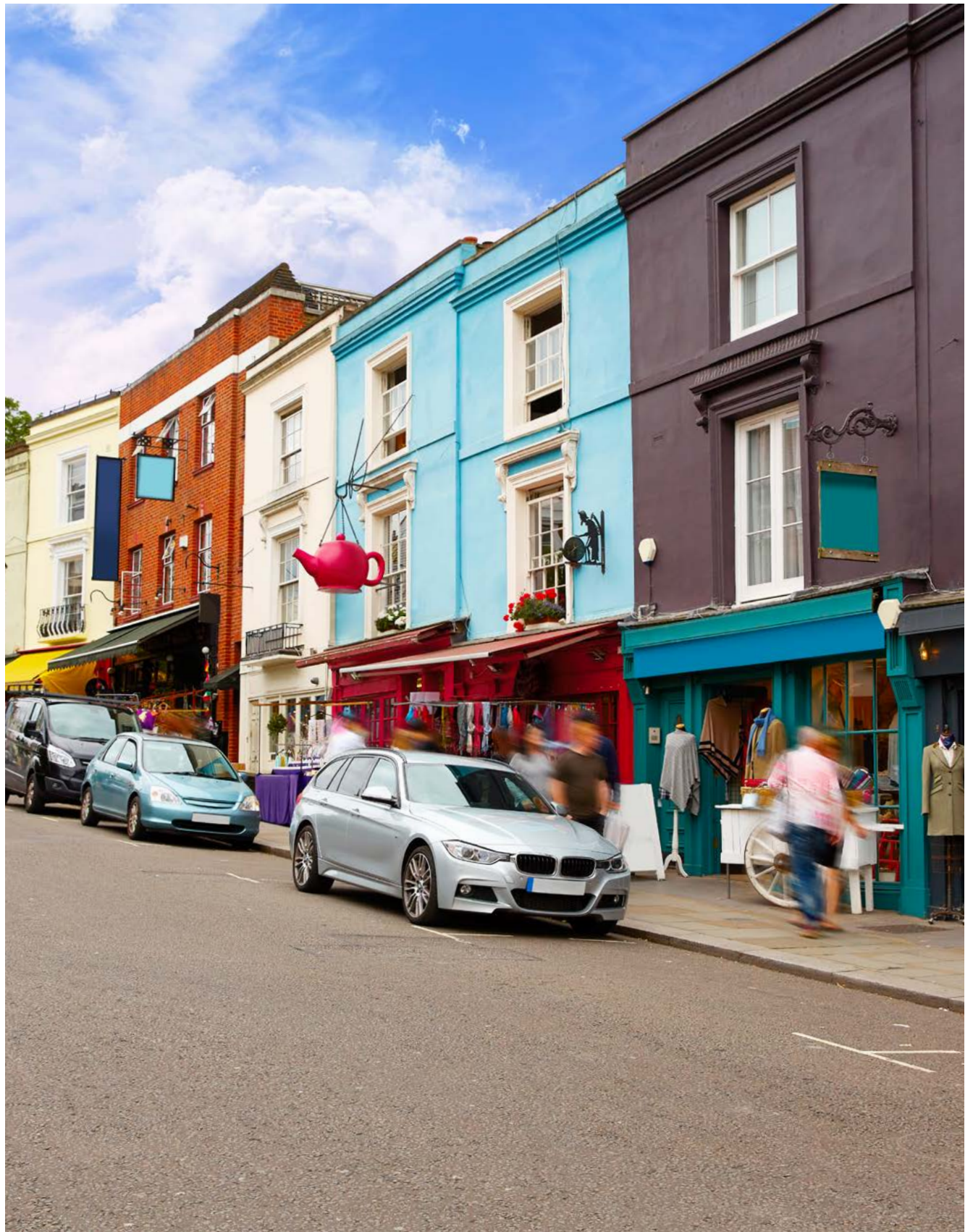


Case study: Wychavon District Council

GEOPLACE UNDERTOOK
A SIMILAR EXERCISE
WITH WYCHAVON
DISTRICT COUNCIL IN
COLLABORATION WITH
CIPFA AND CIVICA.

The initial results indicate:

- 165 records initially reviewed
- 26 can't be found in NDR
- 53 need further desk-based review
- 86 found in NDR
- This has taken 12 person hours so far



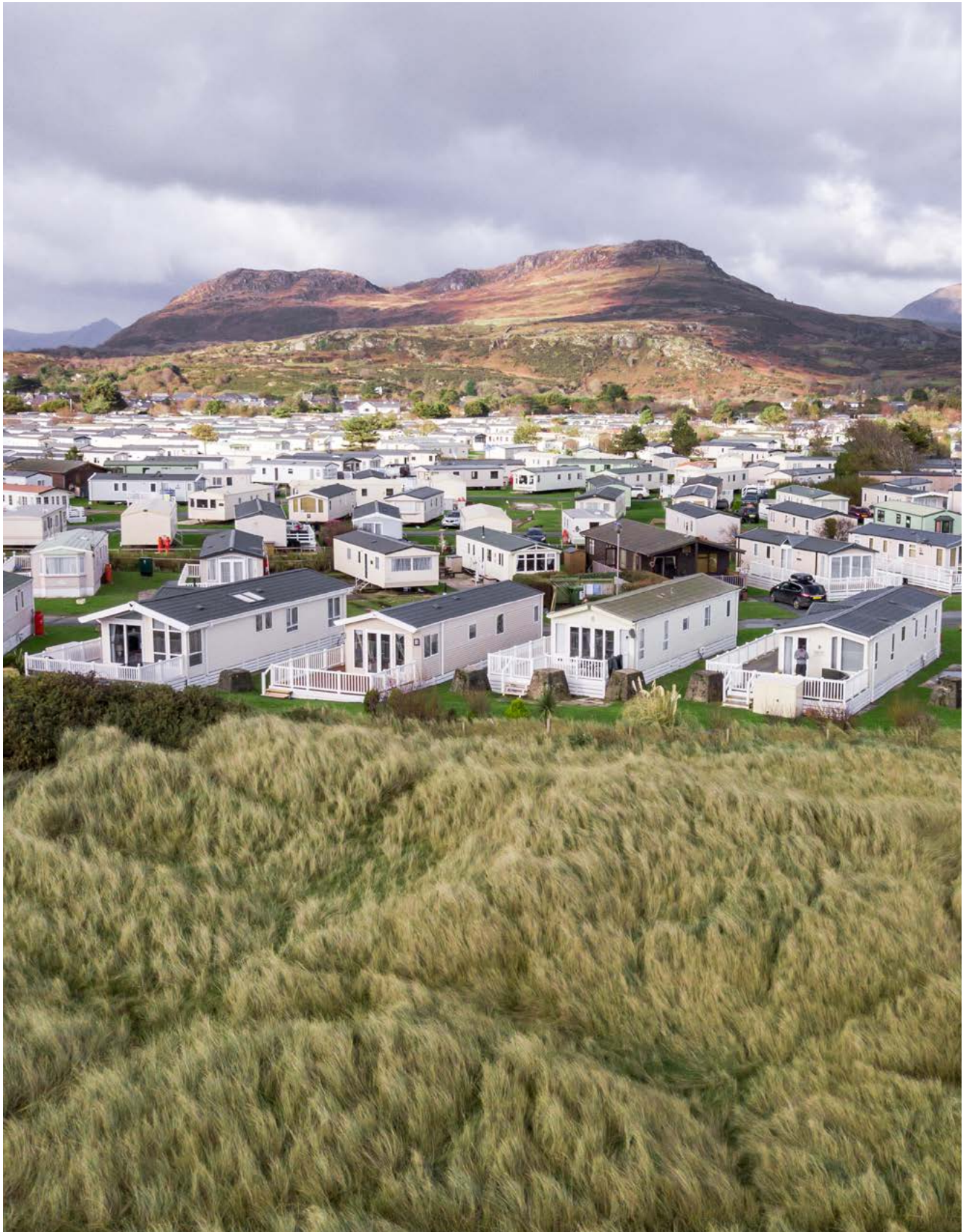
About us

JOINTLY OWNED BY ORDNANCE SURVEY (OS)
AND THE LOCAL GOVERNMENT ASSOCIATION
(LGA), WE ARE EXPERTS IN DATA COLLECTION,
MANAGEMENT AND ANALYSIS.

Under contract, we work with every council to build and maintain a central hub of 42 million addresses and 1.39 million streets, taking feeds from councils, central government, Royal Mail and the Scottish, Northern Ireland, Isle of Man and Channel Island governments of address and street data. The resulting data is the National Address and National Street Gazetteers.

Through a stringent data quality process, we synchronise and match data against 94.61 million records from several authoritative government property and address databases. Through a validation and assurance process we run 359 checks on each record before being accepted into the database. Data is enriched and transformed by adding the best attributes from source datasets to enhance overall quality of the product. Around 2 million records are updated monthly.

We validate the data against external data sources including the VOA's council tax and non-domestic rates achieving a national match rate of 99.92% and 96.15% respectively.



“GeoPlace delivered a report which our business rates team readily accepted. This helped us to confirm confidence in our register as well as find the “needles in the haystack” – properties which were missing from our records. We gave GeoPlace a brief to minimise the number of false-positives in the report – thus minimising the amount of resource required on our part – and GeoPlace delivered.”

SIMON BLECKLY, AUDIT AND COUNTER FRAUD MANAGER,
SALFORD CITY COUNCIL



GeoPlace LLP

157–197 Buckingham Palace Road
London SW1W 9SP
T. 0207 630 4600

Contact: Richard Duffield, Senior Consultant
consultancy@geoplace.co.uk · @GeoPlaceLLP
<https://www.linkedin.com/company/geoplace-llp>
geoplace.co.uk