



How to keep streets moving



GeoPlace enables excellence in street data management.



We support local authorities, utilities and contractors, to utilise and maximise the value of the National Street Gazetteer (NSG), helping to improve traffic flow and keep streets moving.

Find out more about how we can help you.

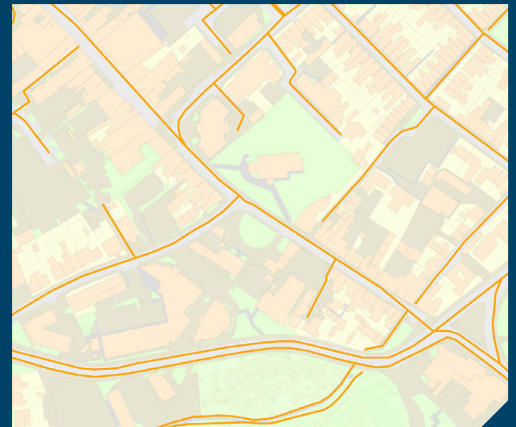
1

National Street Gazetteer

We are the Custodian of the NSG, working with every highway authority in England and Wales to consolidate local street data at a national level.

The NSG holds authoritative information on all streets across England and Wales, with updates on 1,486,432 streets and 18,865,643 features submitted daily by local authorities. By leveraging this comprehensive dataset, fewer streets need to be dug up repeatedly, helping to keep traffic flowing smoothly.

Local authorities, utilities, and other organisations rely on the NSG as a core resource for services that depend on accurate street data, including the maintenance of the highways network.



2

DataVia, the NSG as an API

DataVia provides a comprehensive street network for England and Wales, enriched with critical details from the NSG.

Daily updates ensure immediate access to this authoritative street data. With DataVia you can access authoritative information about streets. Discover all streets within a defined area and view additional street data such as traffic sensitivity, special engineering difficulties, maintenance responsibilities, and construction details. You can also find information on street access, usage, and restrictions.



© Crown copyright and database rights 2024
OS AC0000813034

Freedom Fibre supercharges connectivity with DataVia

Freedom Fibre is using GeoPlace's DataVia API to plan the rollout of its full fibre, high-speed broadband. Freedom Fibre prioritises the utilisation of existing BT infrastructure, but the reality often necessitates installations on private land, requiring wayleaves from landowners—a process notorious for its inherent delays.

"Working with GeoPlace's DataVia API has proven transformative, providing real-time access to both public and private road data within Freedom Fibre's internal design GIS. As a result, Freedom Fibre has witnessed substantial improvements in service efficiency and customer support since implementing DataVia."

DataVia - unlocking hidden benefits for Monmouthshire residents

GeoPlace helped Monmouthshire County Council save time and money by automating workflows that pull data from DataVia into its web mapping site.

"Our data was previously locked away in a system, leaving teams unaware of which version of their data was stored in the LSG or even unaware that their data was included in the LSG. By using DataVia to publish data internally, we have increased the use and understanding of the LSG. Now our teams can regain a sense of ownership over what data we're publishing, enhancing the trust and quality of the data."

3

FindMyStreet

FindMyStreet lists every street that's held in the NSG.

For England and Wales, Findmystreet.co.uk shows where a street is, what its official name is in the NSG, and who is responsible for maintaining that street. Use it to find out which streets are recorded in the NSG. It's available for non-commercial use only.

Need to know if a street is publicly maintained? Check the List of Streets for quick access to street names, locations, and maintenance details across the NSG. Search by Street Name, USRN or Postcode.



4

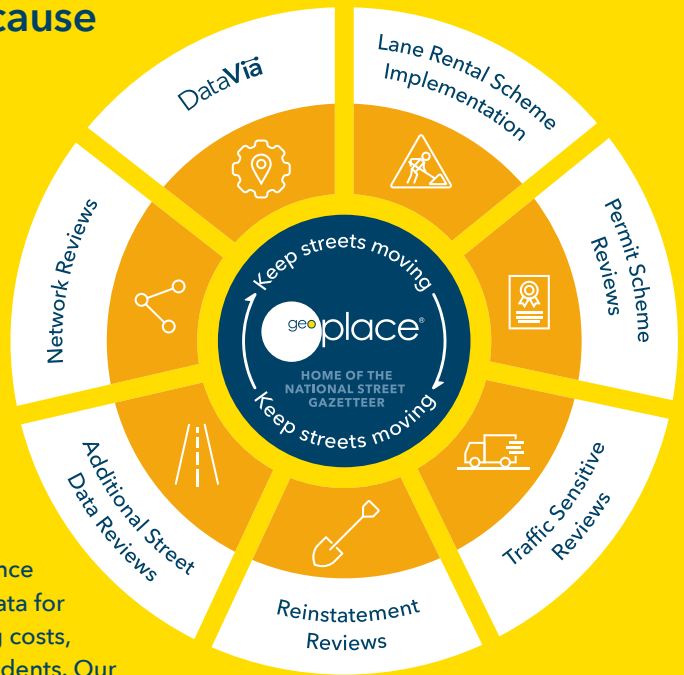
Keep streets moving with GeoPlace's help

Streetworks can cause delays. We're the experts in street data, supporting and enabling delivery of efficient and cost effective traffic management schemes.

Our team has years of experience helping authorities optimise data for smoother operations, reducing costs, and improving services for residents. Our strong ties with the utility sector further streamline the implementation of traffic schemes.

We specialise in:

- Lane rental scheme implementation
- Permit scheme reviews
- Traffic sensitive reviews
- Reinstatement reviews
- Additional street data reviews
- Network reviews



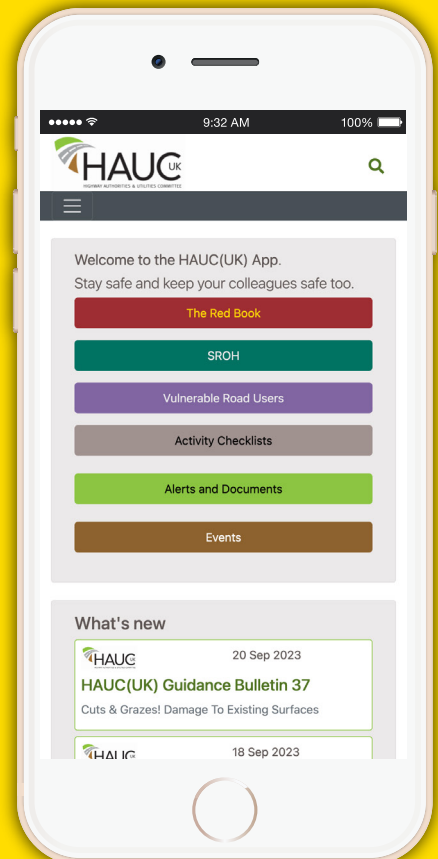
5

HAUC (UK) support

GeoPlace supports HAUC (UK) in the delivery of products and services such as, the Highway Authorities and Utilities Committee UK (HAUC(UK)) App which provides the essential guidance for people and organisations involved in street and road works.

It helps to keep road and street workers safe by providing:

- An interactive check list for working on site
- A simple, searchable copy of the Red Book
- All the latest updates and advice from HAUC(UK)



6

The Road to Net Zero



GeoPlace is proud to manage the Road to Net Zero (RTNZ) project, a groundbreaking initiative to decarbonise the UK's street and road works sectors, aiming for net zero emissions by 2050.

RTNZ develops strategies and innovative tools, like the carbon calculator, to monitor and reduce the industry's carbon footprint.

7

SWA code allocations



We manage the Street Works Act (SWA) code allocations.

GeoPlace, on behalf of the DfT, manage the allocation of SWA codes. We work with HAUC (UK) to ensure codes are only allocated to those organisations that are regulated to undertake works in the street.

About GeoPlace



We bring location to life. Our vision is a world in which everyone benefits from the power of location data.

For over 20 years, the GeoPlace Streets Team has built strong, trusted relationships with every local authority in England and Wales. Supported by robust processes and governance, we ensure continuous improvement of the data, allowing the NSG to meet both current and future user needs.

GeoPlace helps you to achieve excellence in street data management. We support local authorities, businesses, contractors, and all kinds of organisations to work with and get more value from the NSG to help traffic flow through the authority.

www.geoplace.co.uk/keepmoving



GeoPlace is a public sector limited liability partnership between the Local Government Association and Ordnance Survey

GeoPlace LLP · Fourth Floor North · 65 Goswell Road · London · EC1V 7EN
T. 020 7630 4600 [@GeoPlaceLLP](https://twitter.com/GeoPlaceLLP) [s.geo.place/linkedin](https://www.linkedin.com/company/s.geo.place/)
www.geoplace.co.uk

