



National Audit Office

Address matching and analysis

National Audit Office

March 2022

An introduction to the National Audit Office

**The UK's independent public
spending watchdog.**

**We support Parliament in holding
government to account and help
improve public services through
our high-quality audits**



Key areas of cross-cutting expertise



Why is addressing important to the NAO?

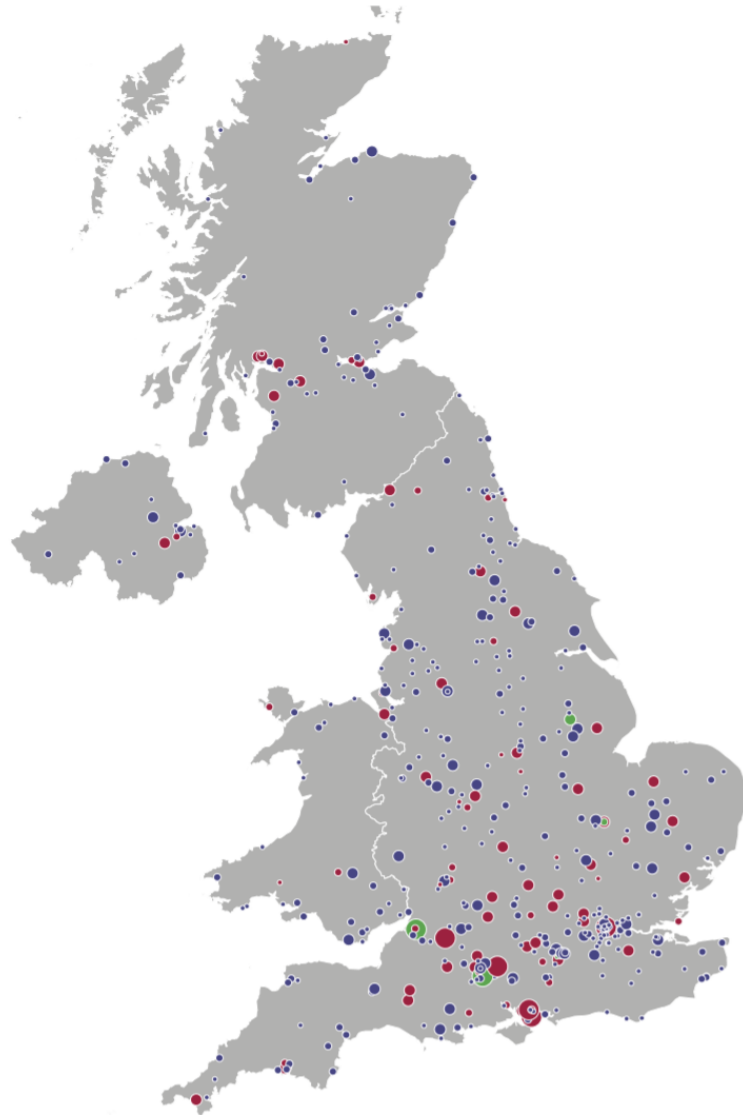
- In auditing the economy efficiency and effectiveness of public service delivery it is important to remember that all public services are delivered somewhere.
- Depending on the context of the audit it is important to know some or all of the following:
 - What is being delivered where
 - To what level of service/quality/cost
 - Servicing which populations
 - Where there are changes in service delivery: what are the potential impacts

Figure 3
Distribution of the Ministry of Defence's civilian workforce in the United Kingdom

The civilian workforce is spread across the Department's bases and sites

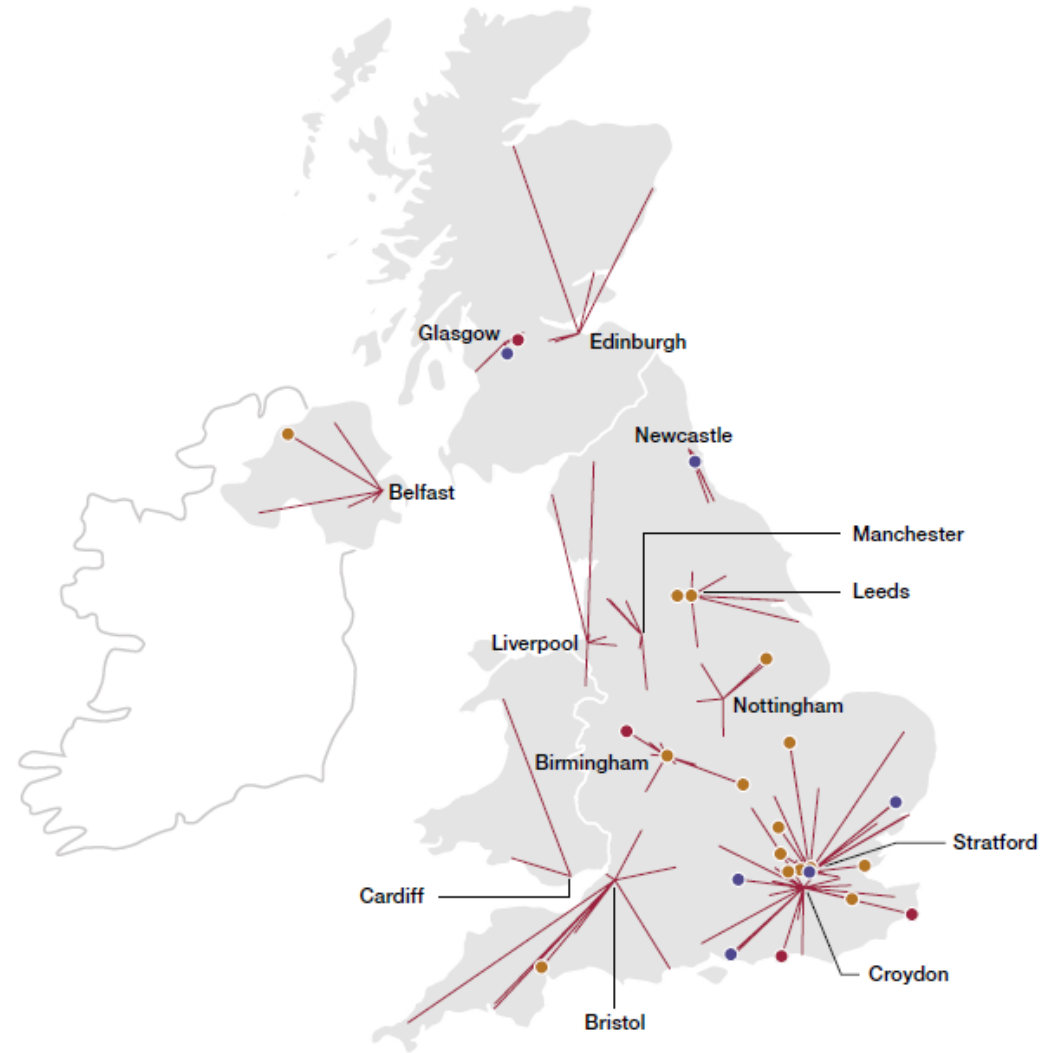
Size of site by headcount

- Over 1,000 staff
 - Less than 1,000 staff
 - Less than 100 staff
 - Less than 10 staff
- One defence organisation at site
 - Two defence organisations at site
 - Three or more defence organisations at site

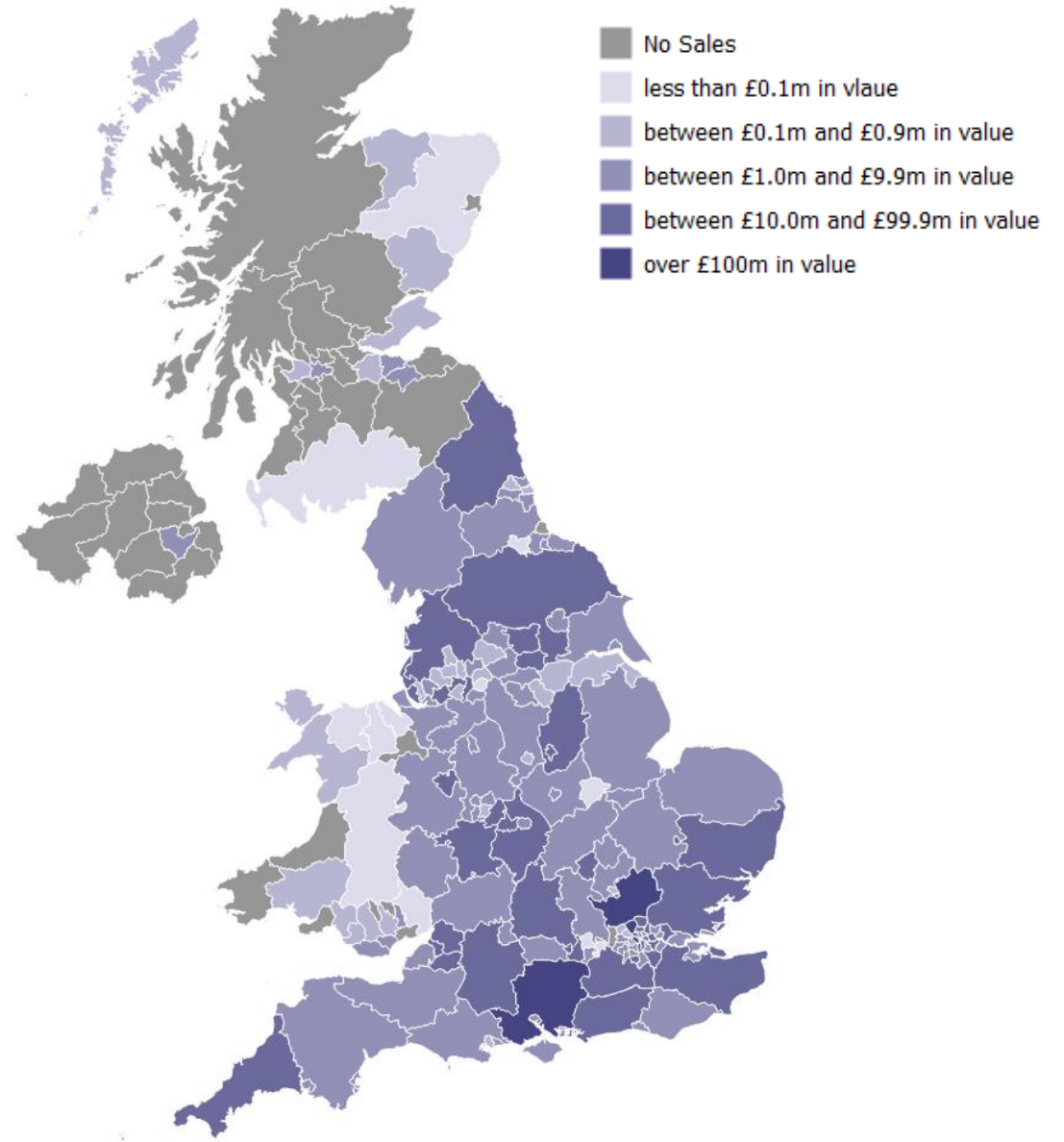
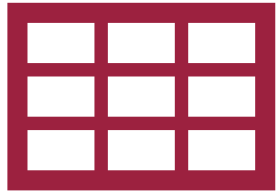


Source: Reforming the Civilian Workforce, March 2019

Figure 9
HMRC regional centres and links to the current offices which will transfer work and staff to each regional centre

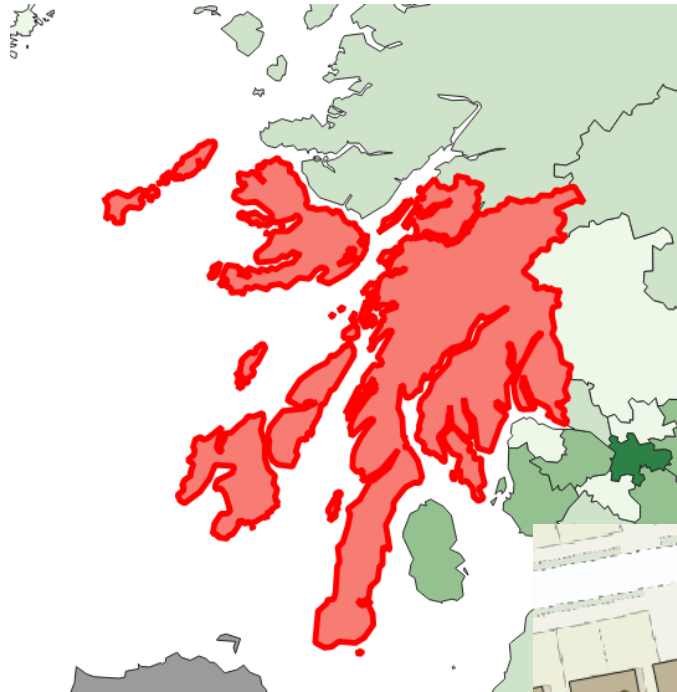


Source: Managing the HMRC Estate, January 2017



Source: Investigation into HMG Land Disposal and Strategy, 2019

The challenge of addressing



Client data

Argyll and Bute

S12000035

Statistical release / shapefile / gpkg / GeoJSON

Argyll & Bute

S12000035



GSS codes for geographies make joining easier (Not fool-proof but easier)

Manually georeferencing address strings can be.....
time consuming and challenging



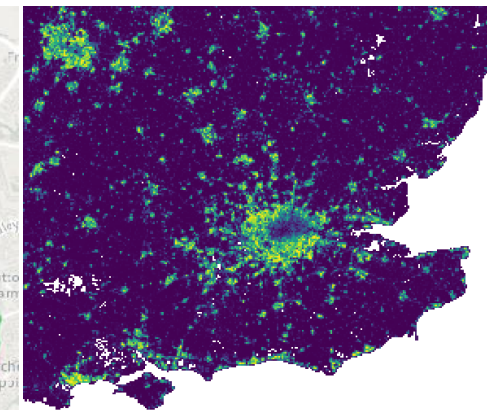
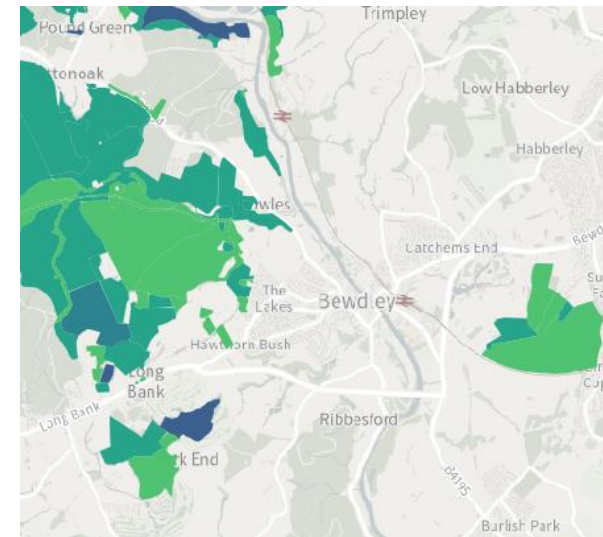
Address	Issue?
MURCHISON HOUSE EH9 3LA DEPARTMENT FOR...	Postcode in the middle
LAUREL COTTAGE DOVENBY COCKERMOUTH CUMBRIA CA12 0PN	potential typo
SILVER STREET CLINIC LAND LONDON N8	rough geolocation
ROSE COTTAGE 27-29 HALLCHURCH ROAD DY2 0TQ	Regex miss

Why should we all care about accurate addressing

Its foundational to place based analysis and evaluation

It builds efficiencies: clean once, store once, use many

Higher confidence in accuracy of data received from other departments





National Audit Office

Thank you

For more information about the work of the NAO

Visit our website

www.nao.org.uk

or follow us on twitter

[@NAOorguk](https://twitter.com/NAOorguk)