



streetworks

Designing the future of
streetworks: AI enabled
innovation

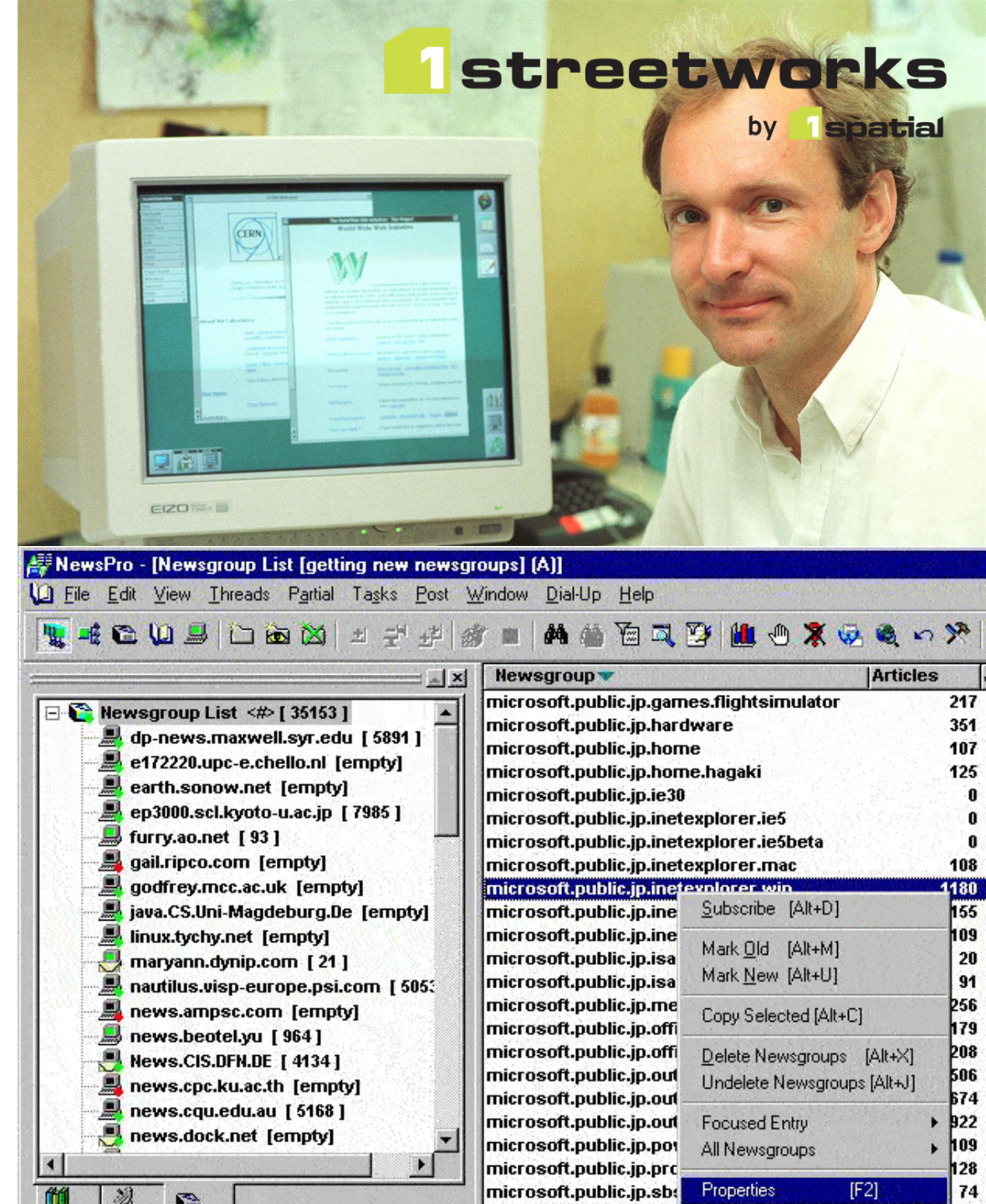


Andrew Fennell



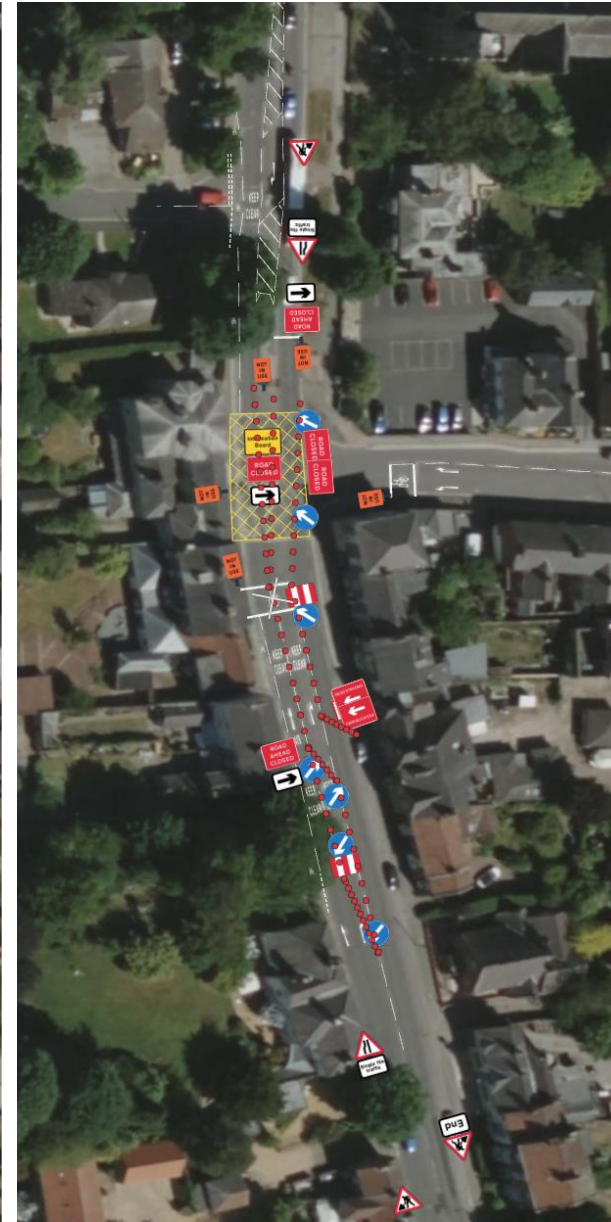
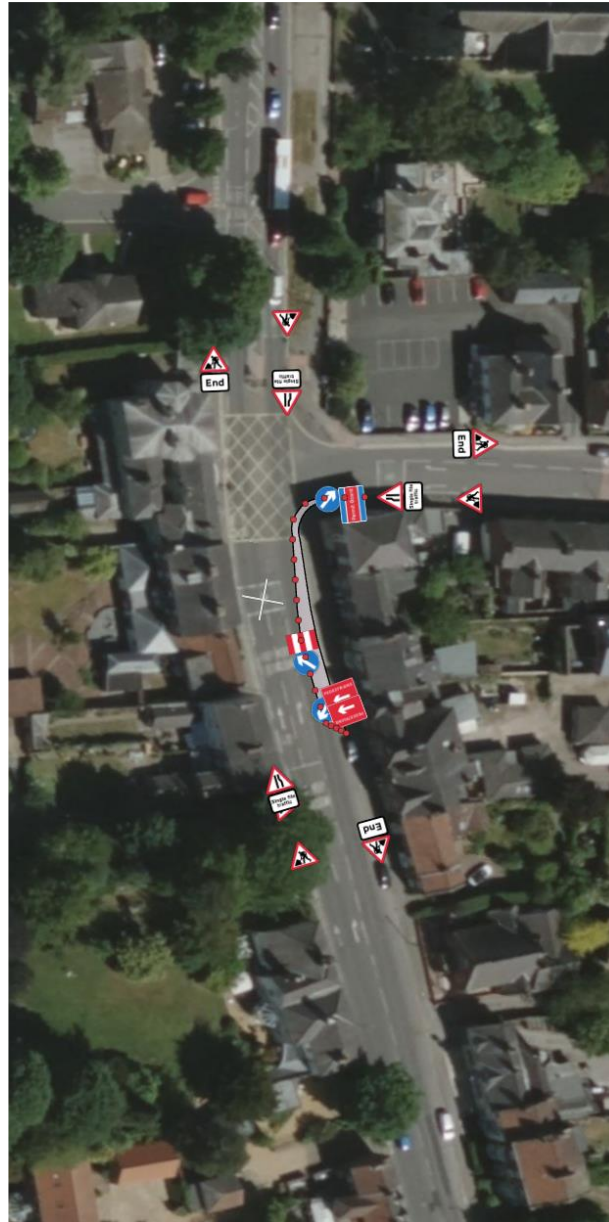
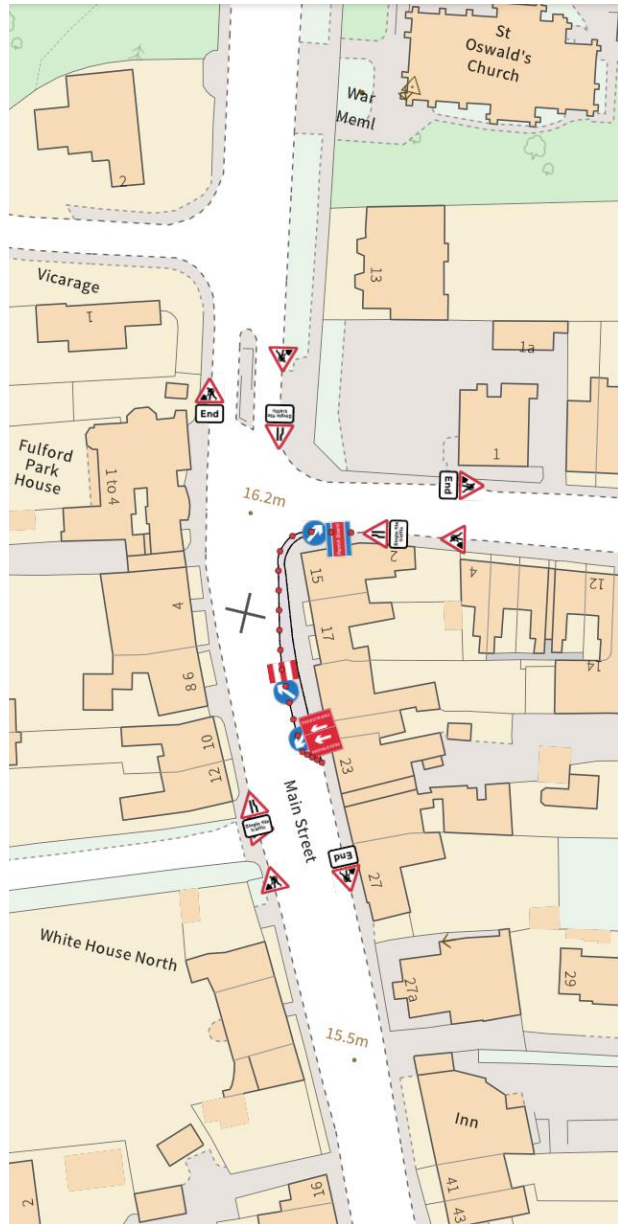
A Refresher...

- How AI and applications like ChatGPT work.
- Tim Bernards Lee invented the internet in 1983.
 - Written English
 - Images
- Why is this important?????
- Because the data is largely publicly accessible.
 - 175 trillion gigabytes



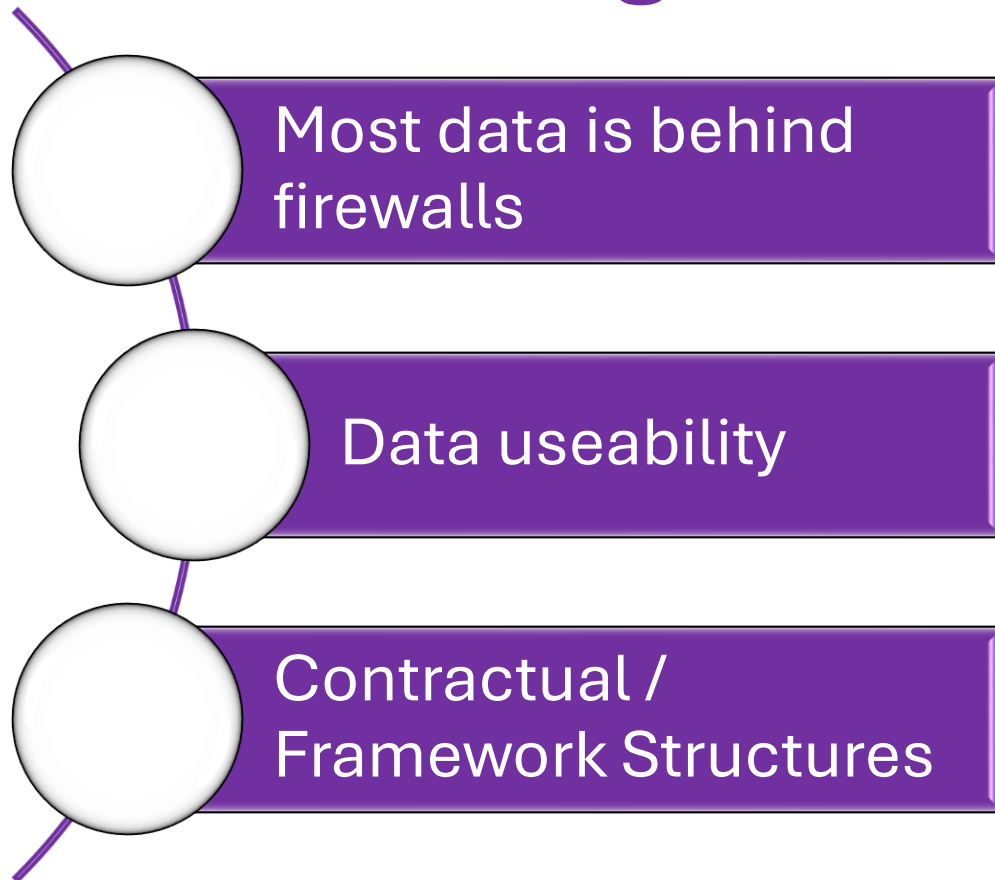
-
- The map displays the following primary schools in Rotherham:
- Countdown Court School and Community College
 - Kingsbury Academy
 - Sherbourne Fields School
 - Christ the King Catholic Primary School
 - St Augustine's Roman Catholic Primary School
 - Hill Farm Primary School
 - St Peter's Catholic Primary School
 - St Elizabeth's Roman Catholic Primary School
 - Broad Heath Community Primary School
 - St Mary and St Benedict Catholic School
 - St Mary's Roman Catholic Primary School
 - St George's Roman Catholic Primary School
 - St John's Roman Catholic Primary School
 - St James' Roman Catholic Primary School
 - St Michael's Roman Catholic Primary School
- A scale bar at the bottom left indicates a distance of 500m.

The difference AI makes

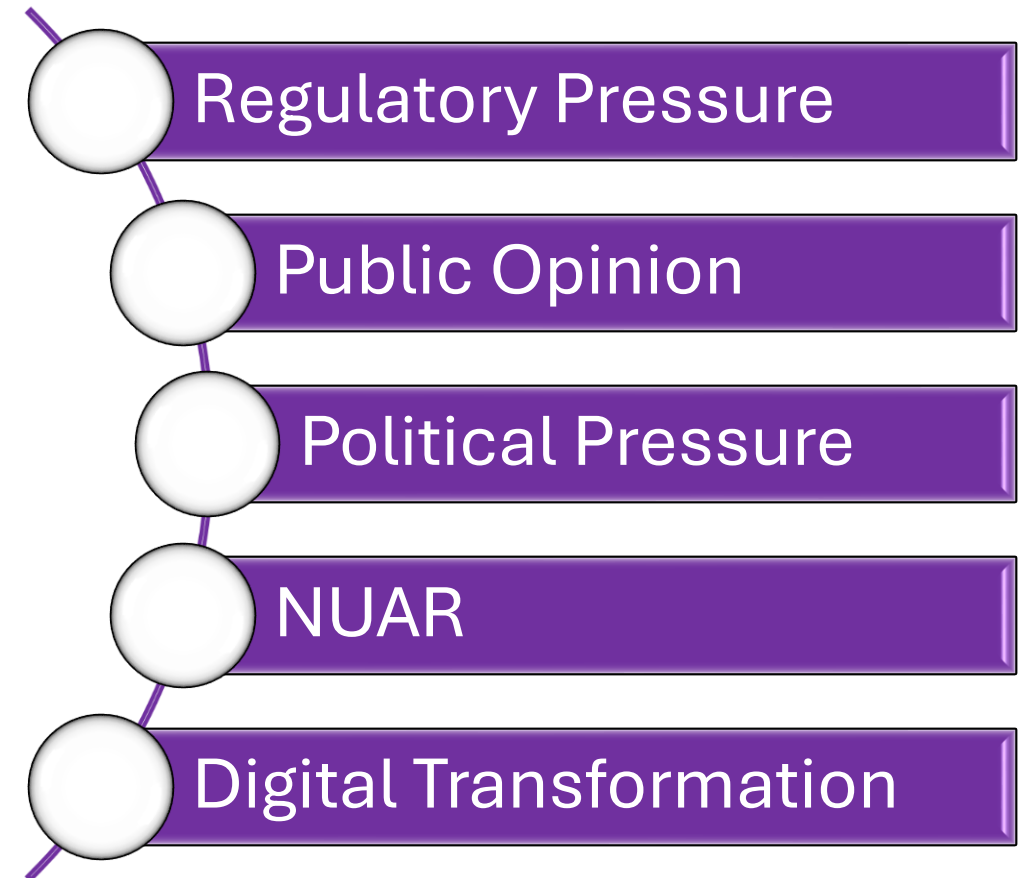


Industry Challenges & Opportunities

Challenges

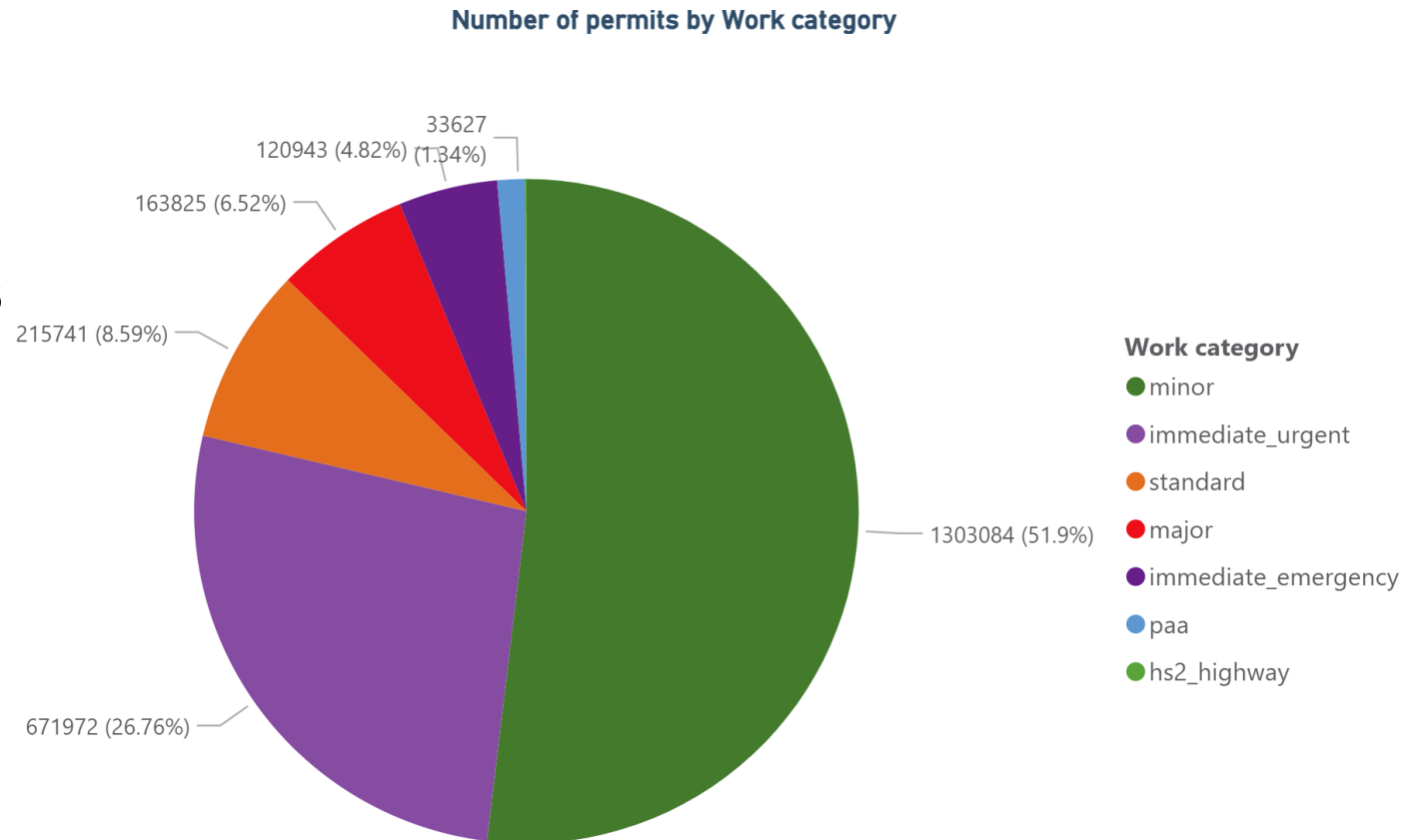


Opportunities



What does this mean today?

- 2.51 Million Permits 2024
- 1.72 Million Planned Works
- 344 hours
- 14.3 days



Streetmanager Data Jan 24 – Jan 25

Tomorrow...?



streetworks

Designing the future of
streetworks: AI enabled
innovation



Andrew Fennell

