

# Smart, Safer Connected Technologies for Streetworks

Protect workers | Automate work zones | Inform stakeholders



Michelle Curran  
Head of Commercial Operations



# Streetworks face 5 persistent challenges

- Worker exposure to live traffic
- High public disruption and complaints
- Inconsistent standards
- Limited real-time visibility
- Poor data for compliance and planning

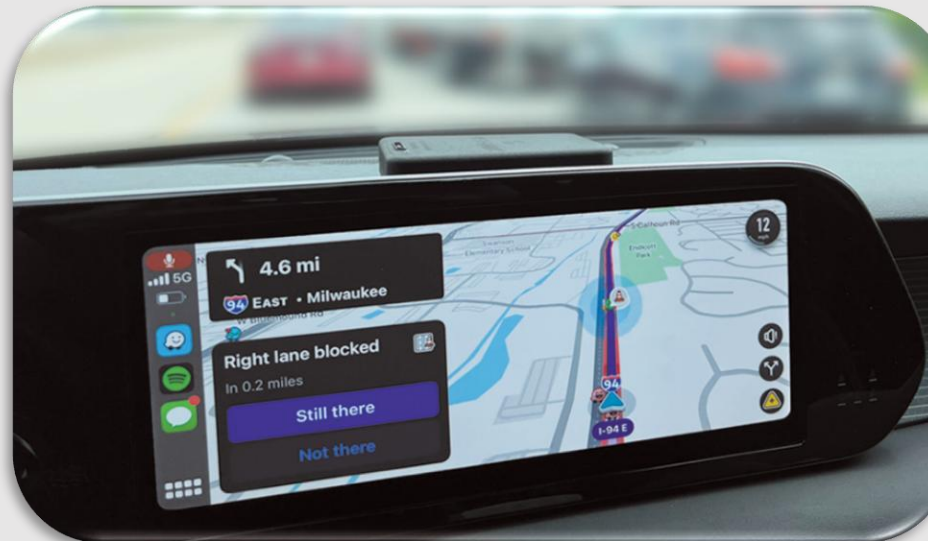
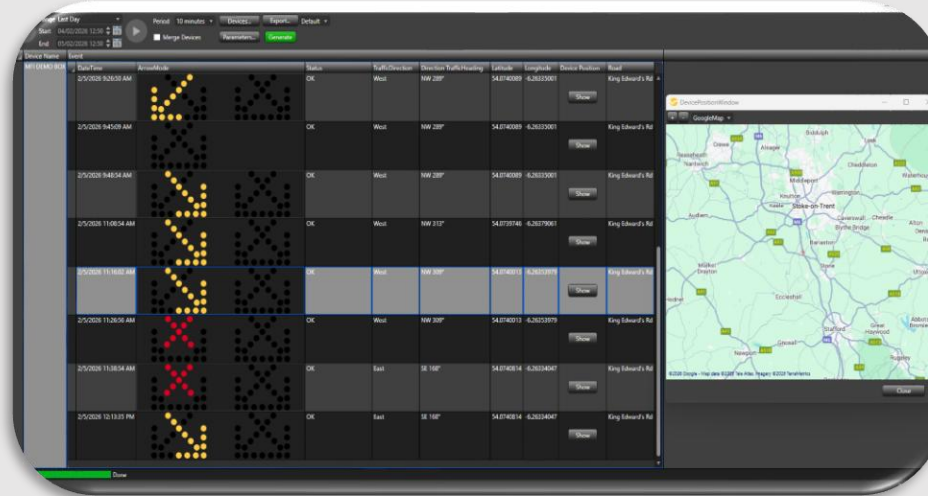


How can temporary ITS solutions help?

# Connected Smart Arrow Lamp



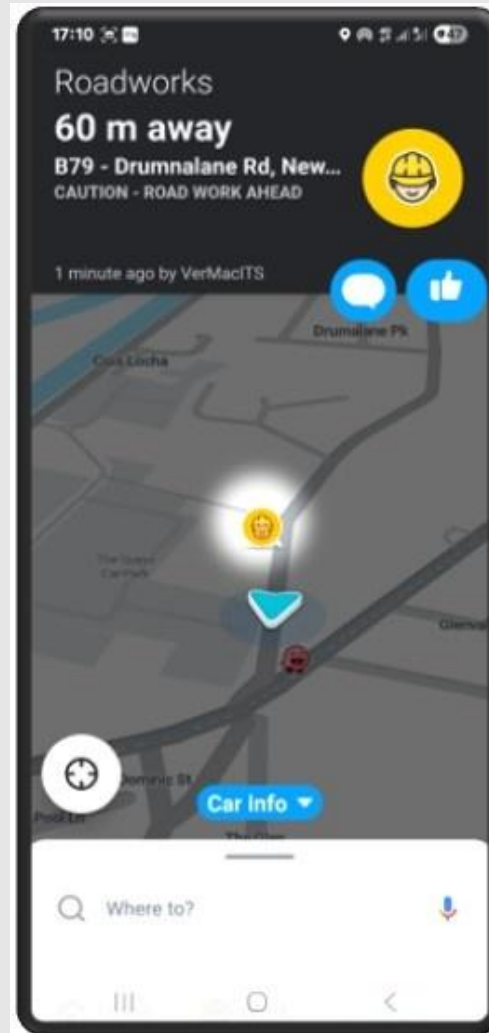
- Real-time lane closure information
- A record of light arrow activation and history
- GPS location of all works vehicles in the field
- More accurate information about closures to 3rd party data providers (in-car audio and visual alerts) connected vehicles



# Work Zone Location Marker (WZLM)



- Work Zone start and end point
- GPS Location
- Road name along with start and end point
- Advance warning notice
- Direction of traffic flow
- Information pushed in real-time to WAZE, informing motorists of work zone ahead
- Shows live access and egress points for works traffic
- Dual purpose – reporting speeds on diversion routes



Information flow to project websites, connected vehicles and in-car navigation systems

# Case Study: CAV communications



## Client: Milton Keynes Council

- Mobile VMS provided open protocols for Connected Autonomous Vehicle communications
- Communications and reporting through JamLogic software
- Advance warning of driverless bus exiting onto mainline displayed upstream on Mobile VMS
- Seamless real-time integration for advance warning ton motoring public

