

Presentation to HAUC (UK) CONVENTION

depotnet

software - ready for service



2nd April 2025

Summary



With a growing 100,000+ users within the Utilities industries, spanning Water, Power, Gas & Telecoms workstreams, our platform, coupled with our specialist integrations to Street Manager, Google and multiple other 3rd party systems makes Depotnet the no 1 choice for Utilities software today.

Designed and built by Utilities people for Utilities people



openreach



CityFibre



Depotnet – A Bespoke Utilities Digital Ecosystem

Depotnet has its core job management portal and app to manage the end to end order management and has supporting supplementary modules to drive further business benefit.

Core Job Management - Operations

- Validation
- Job Management
- Surveys
- Streetworks
- Planning
- Photos
- Reporting
- Reinstatement
- Job Management Set up

Job Management - Operations+

- Street Manager Plug in
- Safe dig print automation
- Auto-scheduling
- Customer Management
- Utility specific bespoke modules
 - Box to Box
 - Planned Vs Actual

Core Job Management - Commercial

- Commercial Reporting
- Supplier Invoices
- Variations
- AFPs
- Rate Card Management
- Productivity
- Commercial Setup

Job Management - Commercial+

- RFQ
- Subcontractor Management
- Cost Recovery
- Timesheets

Supplementary Modules

HSEQ

- Risk Assessments
- Audits and Inspections
- Incident Manager
- Briefings and Push Notifications
- Skills and Competence
- HAVS

Logistics

- Vehicles and Plant
- Stores

Data and integration

- Power BI
- Event Driven Data
- Client API
- Bespoke Integrations



Depotnet – A Bespoke Utilities Digital Ecosystem

Depotnet has its core job management portal and app to manage the end to end order management and has supporting supplementary modules to drive further business benefit.

Core Job Management - Operations

- Validation
- Job Management
- Surveys
- Streetworks
- Planning
- Photos
- Reporting
- Reinstatement
- Job Management Set up

Job Management - Operations+

- Street Manager Plug in
- Safe dig print automation
- Auto-scheduling
- Customer Management
- Utility specific bespoke modules
 - Box to Box
 - Planned Vs Actual

Core Job Management - Commercial

- Commercial Reporting
- Supplier Invoices
- Variations
- AFPs
- Rate Card Management
- Productivity
- Commercial Setup

Job Management - Commercial+

- RFQ
- Subcontractor Management
- Cost Recovery
- Timesheets

Supplementary Modules

HSEQ

- Risk Assessments
- Audits and Inspections
- Incident Manager
- Briefings and Push Notifications
- Skills and Competence
- HAVS

Logistics

- Vehicles and Plant
- Stores

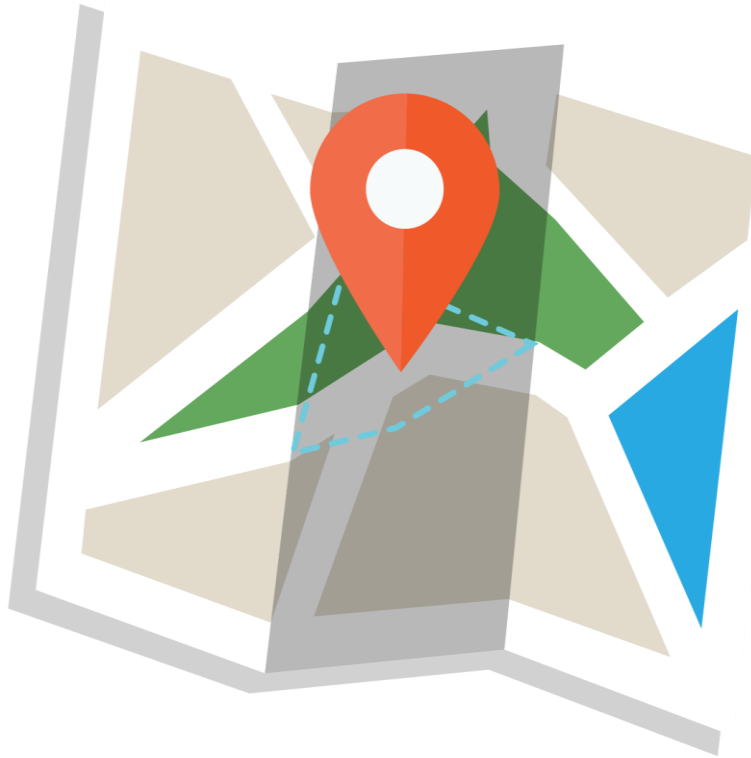
Data and integration

- Power BI
- Event Driven Data
- Client API
- Bespoke Integrations



Operations Management+ - Street Manager Plug in

Seamlessly integrate with the DfT Street Manager system, allowing direct permit applications from the Depotnet job card, with dashboards and reports to track progress. Receive and manage HA notifications directly in the system and via email



What does it do?

Fully integrates with the DfT Street Manager system, allowing users to:

- Manage permits from a single, centralised location.
- Enable site operatives to Start/Stop permits directly on-site in the App.
- Maintain full control over any potential fines.
- Receive real-time, enhanced notifications to prompt key site activities to reduce risks of fine.
- Access a comprehensive reporting suite for detailed insights.

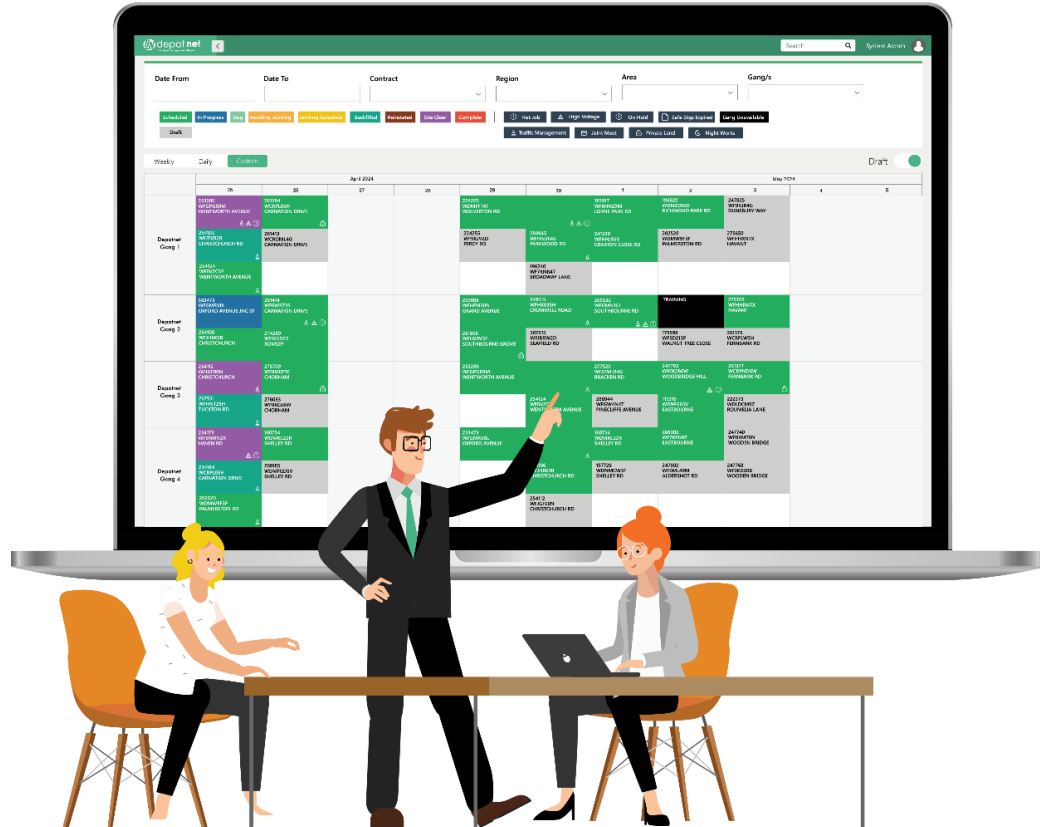
Value to customer

Simplified permit management linked to the jobs within a single system enabling:

- Reduced fines and improved efficiency with site-based notifications and streamlined processes.
- Automatically triggers job and site-specific actions, complete with full audit trail.
- Centralised permit management, simplifying operations and improving oversight.

Operations Management+ - Auto-scheduling

Ability to automatically create schedules of work aligned to business priorities, permit and fluidity task requirements and customer demands



What does it do?

- Uses a range of key factors which can be configured in line with the business priorities, to produce a draft schedule that maximizes efficiency in the field.
- In built algorithms define the schedule for the teams aligned to customer bespoke configuration of factors.
- Allows as much or as little manual intervention as the customer wishes to have – validation and acceptance criteria can be configured

Value to customer

- Reduction in failure as all pre site activities are completed before the schedule is confirmed, thus driving a reduction in FPNs for works outside of permit conditions.
- Reduction in back-office activities through automation of manual tasks
- Removes potential for human error through automation
- Root cause analysis data available for any non completion of works

Operations Management+ - Safe Dig Print Automation

Safe Dig Print Automation streamlines the request and retrieval of Safe Dig prints directly from the Depotnet job card, reducing costs, improving efficiency, and enhancing automation with a 24/7 service.

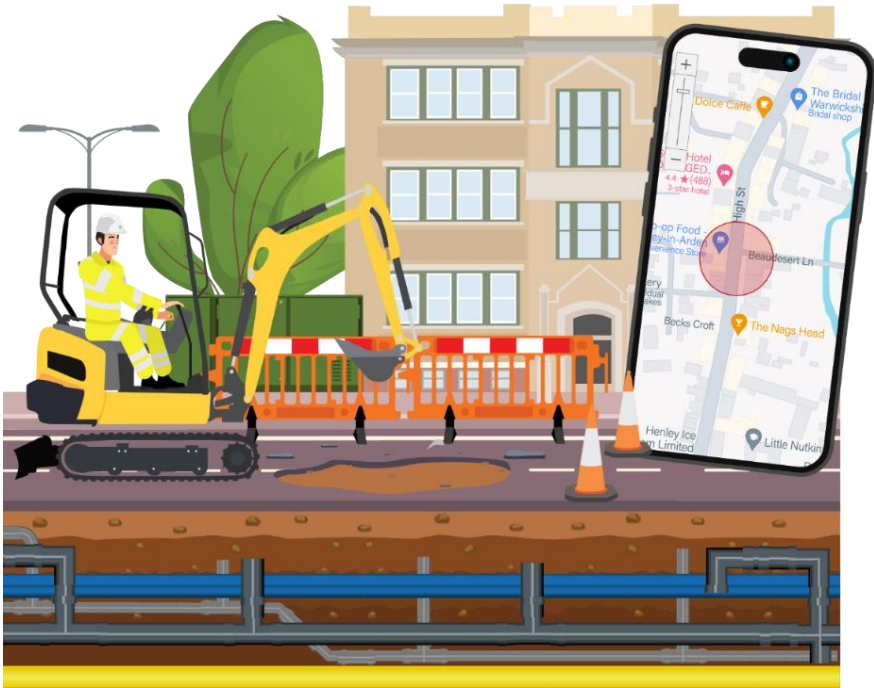
What does it do?

Request Safe Dig prints directly from the job card using the LSBUD plugin. By simply entering job location details, users can:

- Identify affected and non-affected members in the vicinity.
- Configure asset owners of interest, ensuring only the necessary prints are returned.
- Automatically receive prints from both LSBUD members and non-members, with member prints typically available almost instantly (depending on asset owner response times).

Value to customer

- Centralised print requests simplify workflows by consolidating the process into a single location.
- Maximises dwell time, reducing the risk of costly fines due to delays.
- Cost-effective compared to other manual methods, offering significant savings.
- Removes human touch points, apart from location validation.
- Operates 24/7, ensuring uninterrupted service.
- Boosts operational efficiency through enhanced automation.



Pre-Integration for Depotnet Users

Enquiry:



1. User utilises Depotnet for all job-related activities

2. User opens additional Portals

- LSBUD
- DigDat
- GTC
- Equans etc.

3. User emails Asset Owners individually

4. User updates Job Management system that prints have been requested

Processing:

5. Requests for safe digs are returned to email addresses when processed.

6. Manual Outstanding Request management

7. Multiple portals/systems to manage without a central repository.

8. Manual (on or off-shore) application and management of chase queue lists until full job pack completed

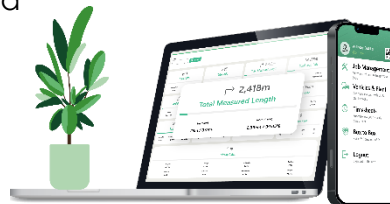


Receipt, Validation & Upload:

9. E-mail receipt of safe digs extracted and manually downloaded and copied into Depotnet ready for validation.

10. All documents manually uploaded back to Depotnet

11. Manual check for completeness of all required prints from various systems and e-mail accounts across multiple systems.



Post Integration!

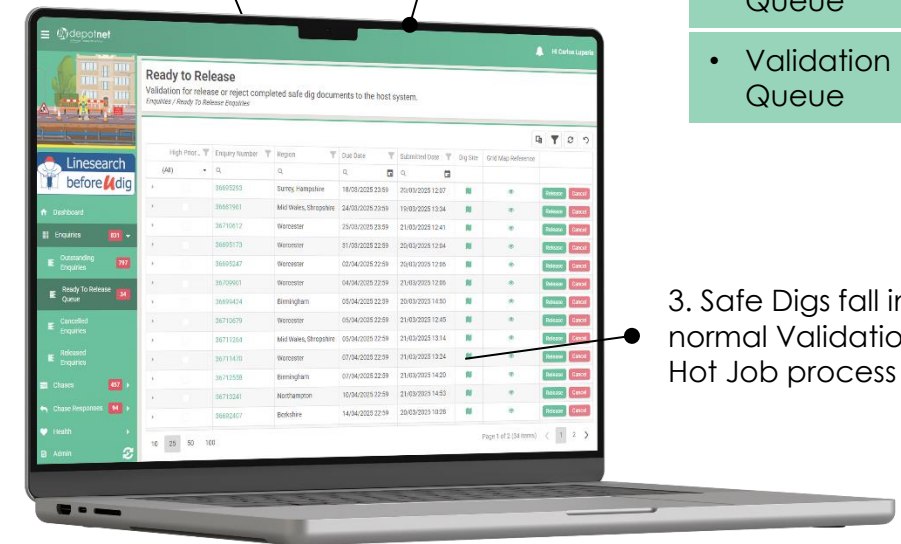
1. User utilises Depotnet for all job-related activities + **generates automated request for Safe Dig Prints**

2. Safe Dig prints **automatically retrieved via LSBUD API** and inserted back into Depotnet

- Enquiry Queue

- Chase Queue

- Validation Queue



3. Safe Digs fall into normal Validation & Hot Job process

Depotnet – A Bespoke Utilities Digital Ecosystem

Get in touch to book a demo or work through the commercial, operational and compliance benefits of Depotnet's solution

How to contact us:

- Call our support team on 0345 2573 549
- E mail enquiries@depotnet.co.uk



Thank you for listening.

Please enjoy a drink on us.

**We are in the first stand on the left as
you exit this room if you would like a
chat!**