



# HAUC UK street and road works – national performance data



# What can we measure?



- Different codes of practice, rules and regulations apply in England, Scotland, Wales & Northern Ireland.
- Similarly, different systems are used in all four nations.
- Simple measures were the answer – data which all nations could retrieve from their various systems.

# Data collected by Scotland, England, Wales & Northern Ireland

01

Number of completed works

02

Number of completed unplanned works

03

Sample inspection pass rates

04

Number of FPNs – potential and issued

05

Number of extensions

06

Number of early starts

07

Road lengths in the UK

# HAUC UK street & road works performance (all four nations combined)

## General measures

- FPNs on completed works **6.3%**
- Early starts on planned works **15.8%**
- Unplanned works as % all works **31.3%**
- Extensions on all works **8.5%**
- Completed works per kilometre **6.5**

Sample Inspection  
outcomes

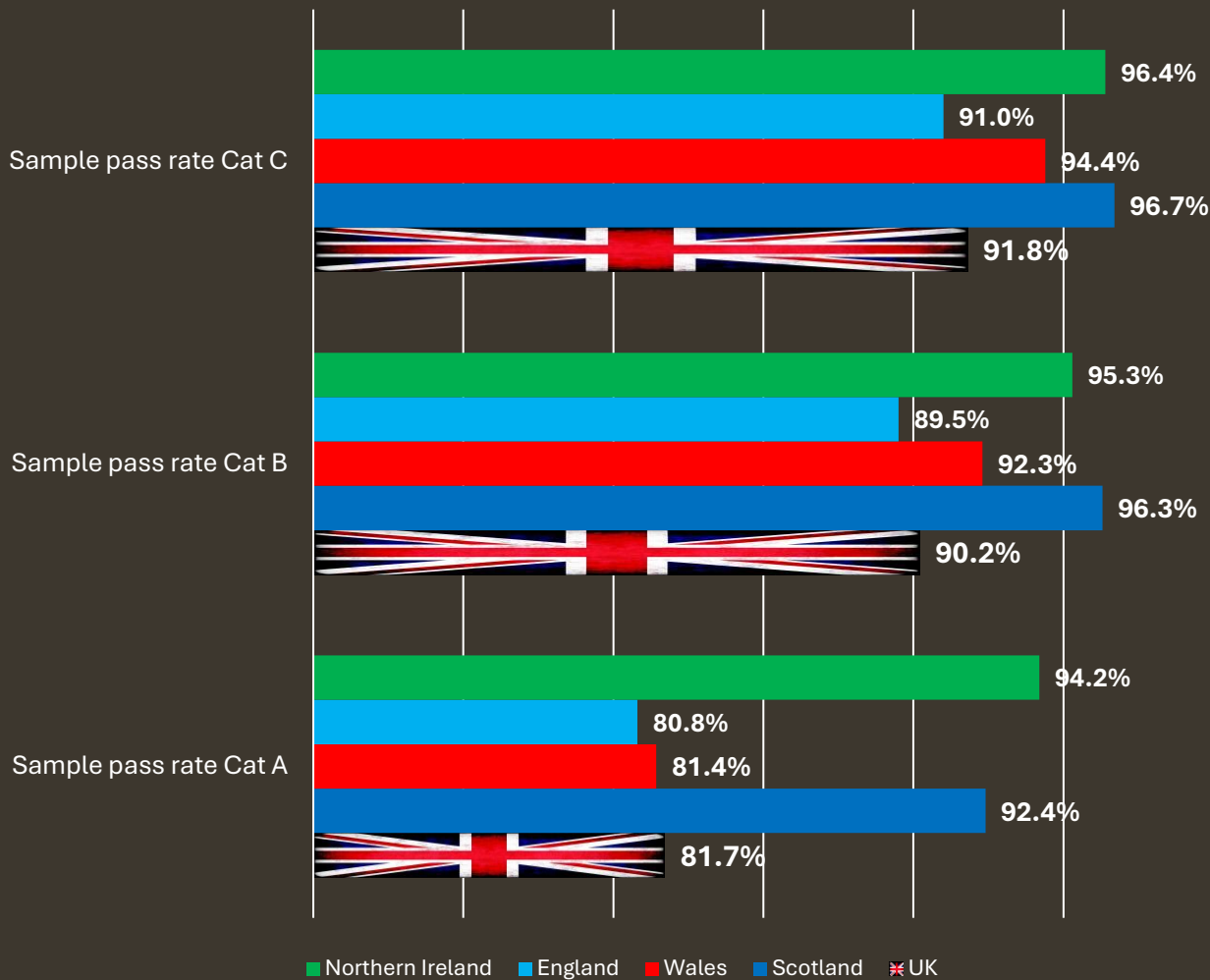
```
graph TD; A[Sample Inspection outcomes] --> B[Category A pass rate 81.7%]; B --> C[Category B pass rate 90.2%]; C --> D[Category C pass rate 91.8%];
```

Category A pass rate  
**81.7%**

Category B pass rate  
**90.2%**

Category C pass rate  
**91.8%**

# HAUC UK street & road works performance by nation

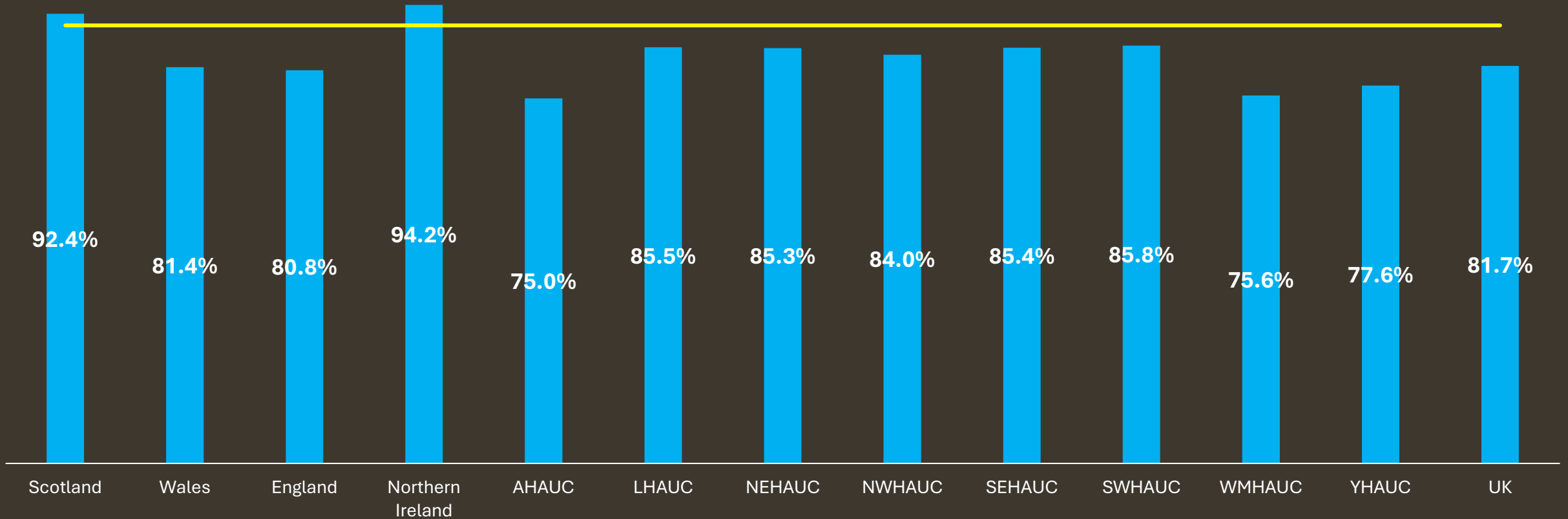


	UK	Scotland	Wales	England	Northern Ireland
<b>Completed works per km</b>	<b>6.5</b>	<b>2.9</b>	<b>3.3</b>	<b>7.1</b>	<b>11.3</b>
% extensions on all works	8.5%	8.8%	9.2%	9.4%	1.2%
<b>FPNS as % complete works</b>	<b>6.3%</b>	<b>1.5%</b>	<b>4.8%</b>	<b>7.6%</b>	<b>N/A</b>
Early starts as % planned works	15.8%	8.9%	29.1%	12.3%	0.1%
<b>Unplanned works as % all works</b>	<b>31.3%</b>	<b>16.9%</b>	<b>43.4%</b>	<b>34.8%</b>	<b>9.3%</b>

# Street & road works performance in all HAUC UK regions and nations – sample inspections

## Sample pass rate Cat A inspections

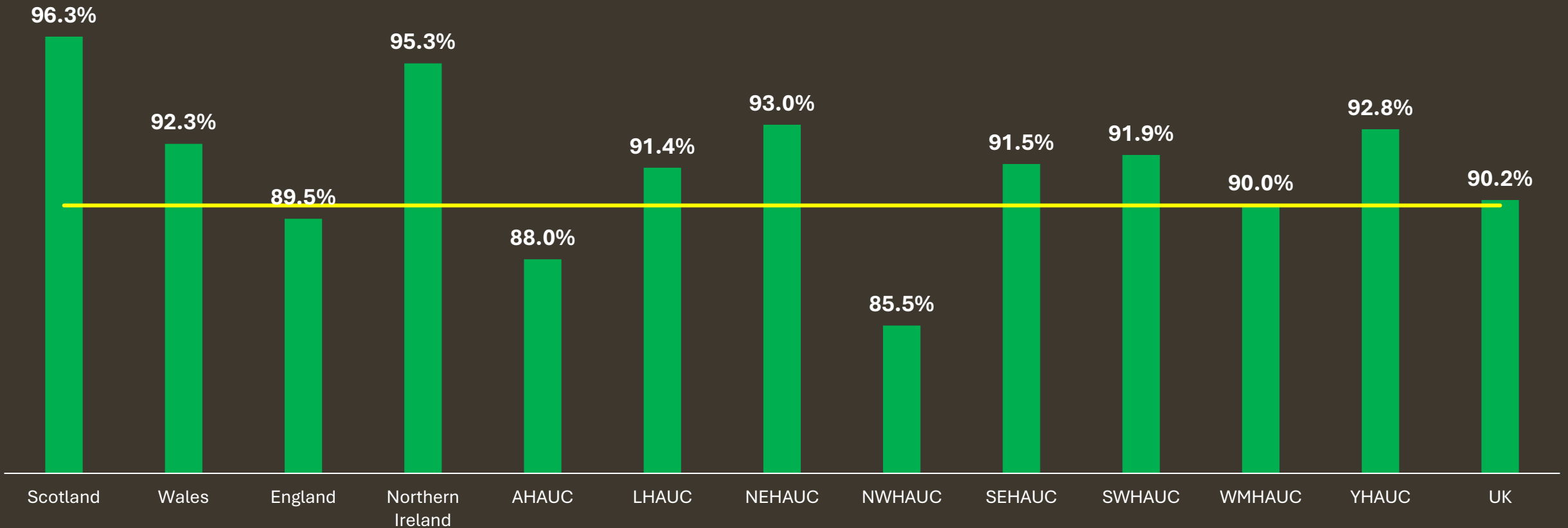
Sample pass rate Cat A    Required pass rate



# Street & road works performance in all HAUC UK regions and nations – sample inspections

## Sample pass rate Cat B inspections

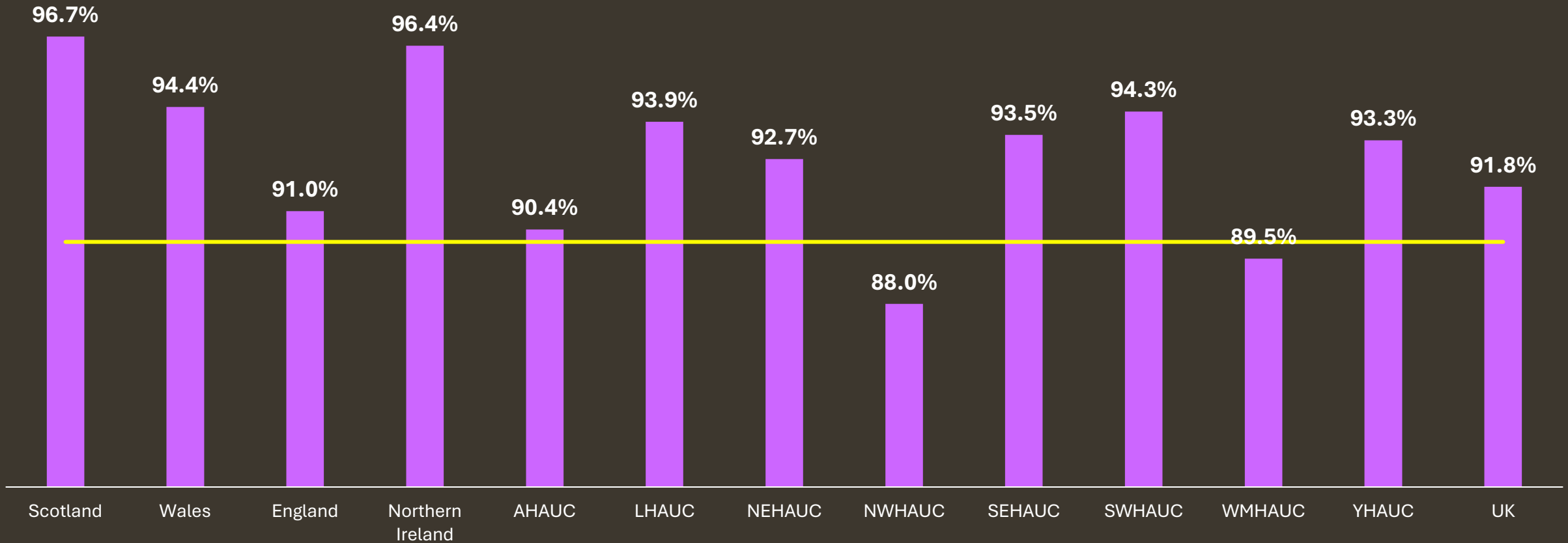
Sample pass rate Cat B      Required pass rate



# Street & road works performance in all HAUC UK regions and nations – sample inspections

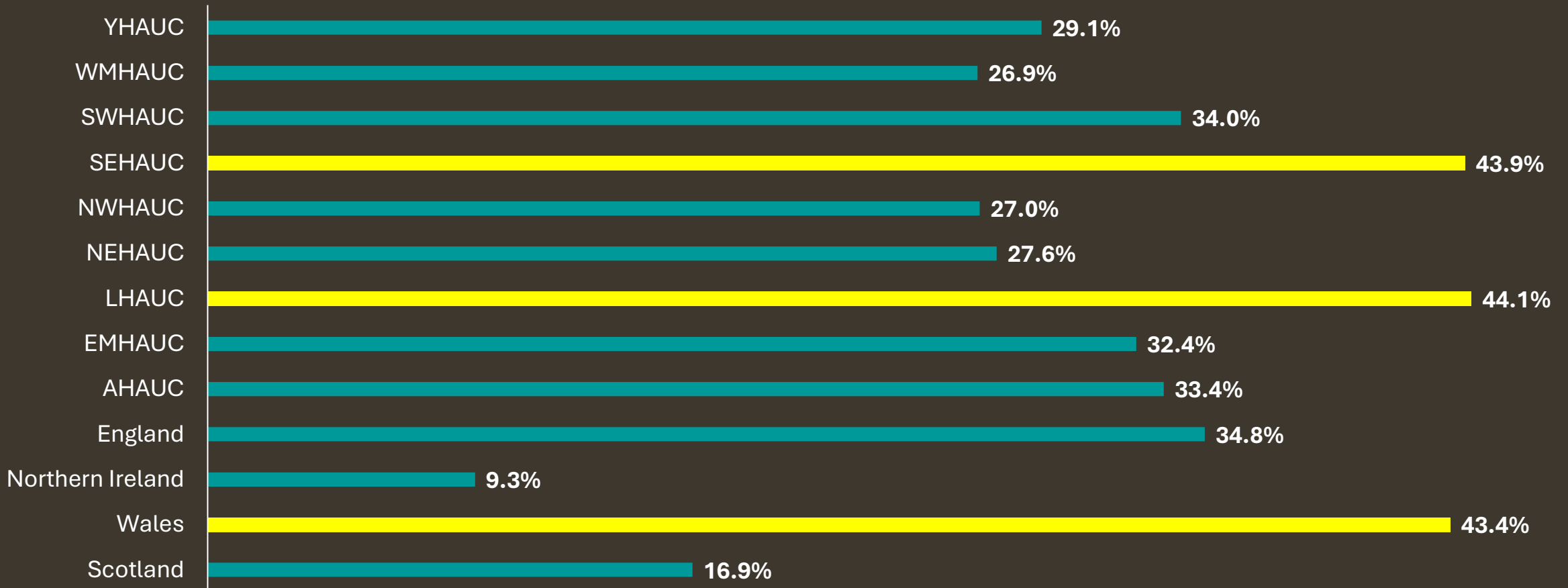
## Sample pass rate Cat C inspections

Sample pass rate Cat C    Required pass rate



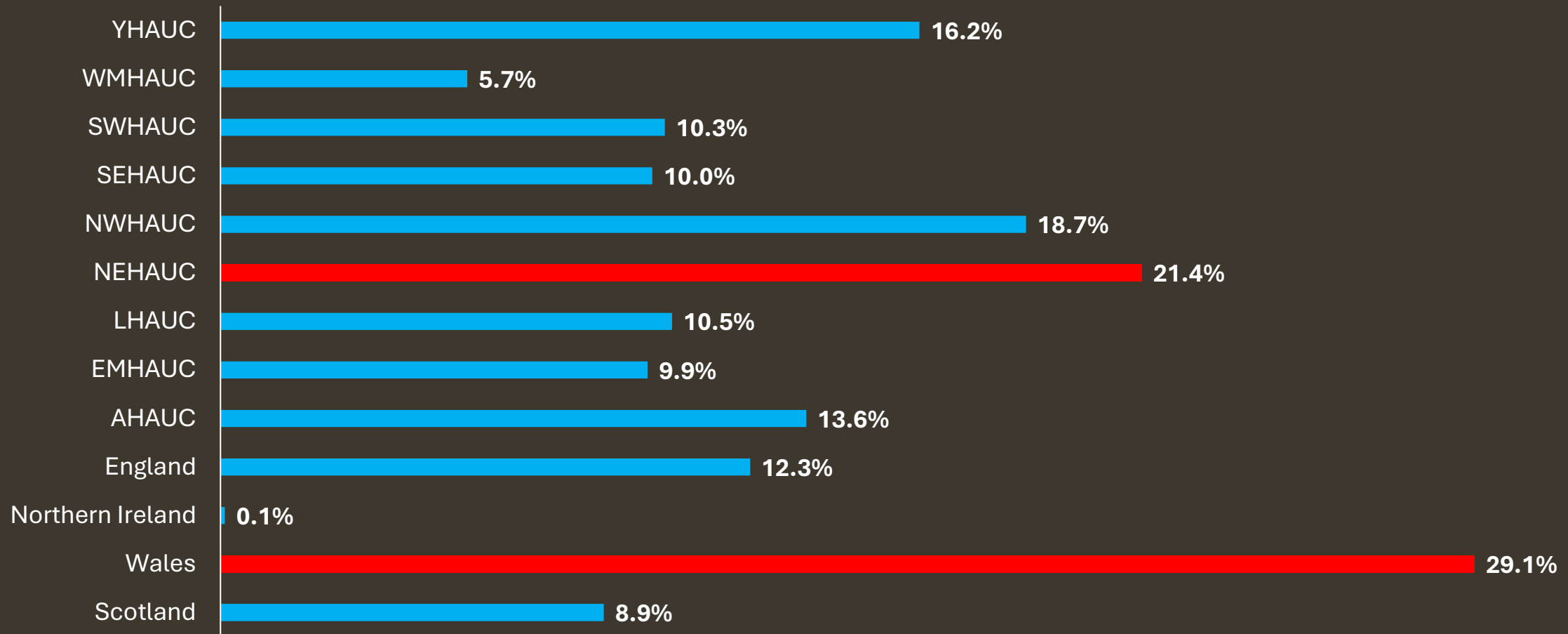
# Street & road works performance by all HAUC UK regions and nations

Unplanned works as % all works



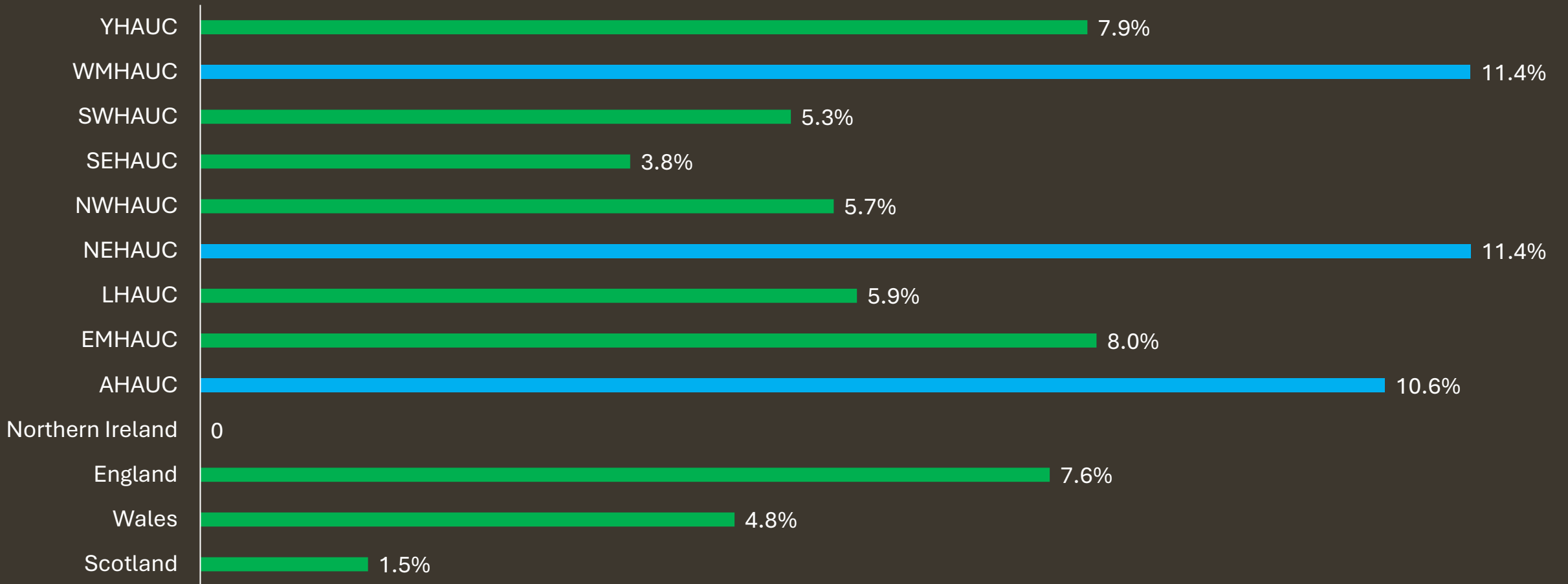
# Street & road works performance by all HAUC UK regions and nations

Early starts as % planned works



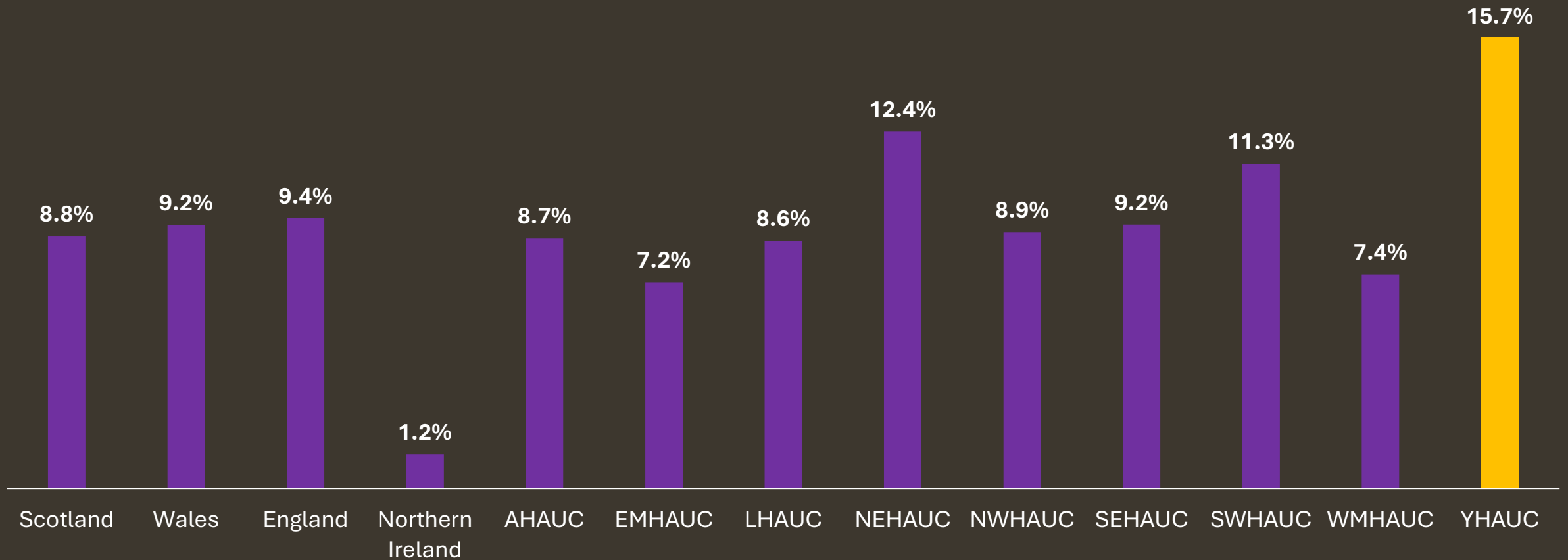
# Street & road works performance by all HAUC UK regions and nations

FPNS as % of completed works



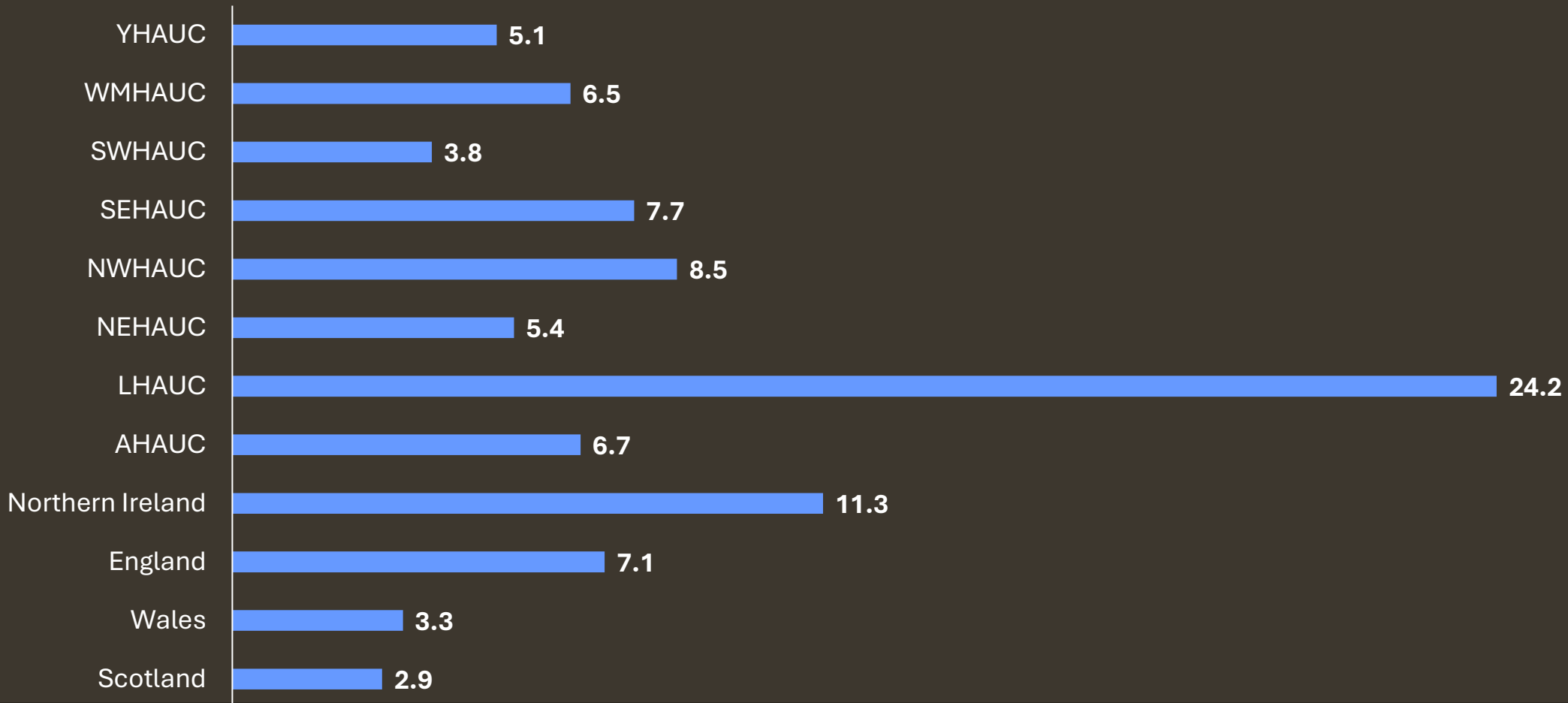
# Street & road works performance by all HAUC UK regions and nations

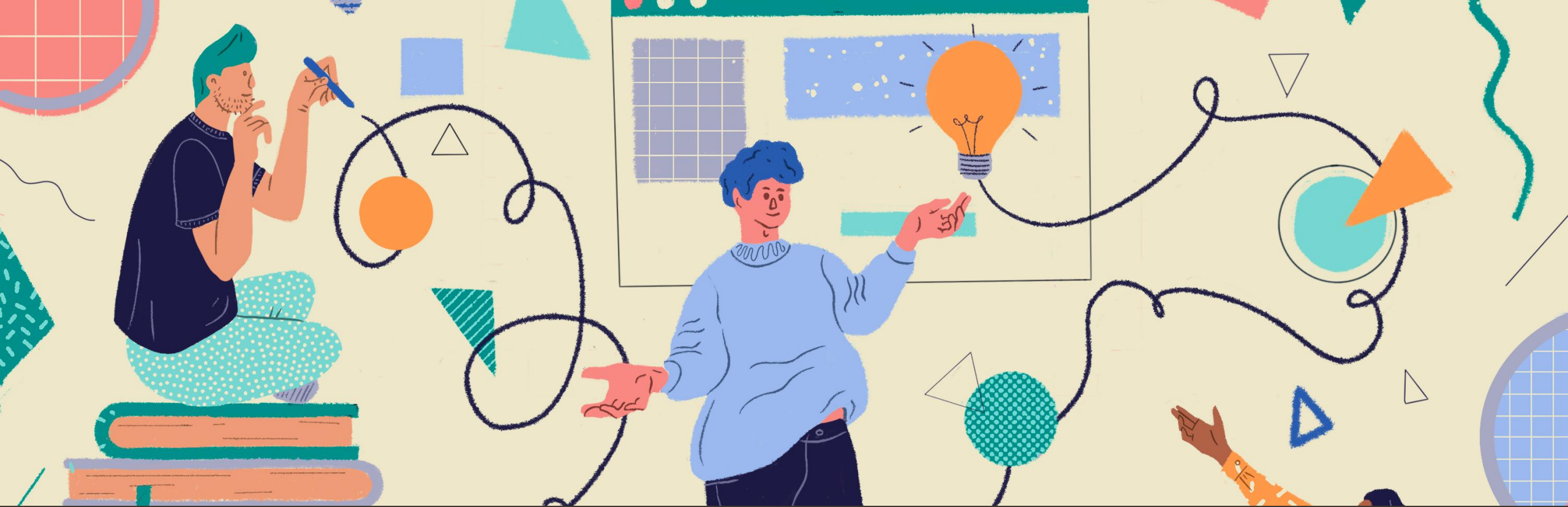
% extensions on all works



# Street & road works performance by all HAUC UK regions and nations

Completed works per km





**Questions and thoughts?**

