

<https://www.hauc-uk.org.uk/>

<https://www.linkedin.com/company/91528184/admin/dashboard/>

Julie Payne HAUC (UK)
Communications Manager

Our Vision

About HAUC

Our People

Our Work

Our Partners

Our Vision

and road works sector is at a pivotal look ahead to 2030, our industry must the growing demands of members of the force, and the burgeoning growth in

in

StreetWorksUK

JAG(UK)



NEED HELP?

Ask Annie

Have more questions for HAUC(UK) or need some help from us? Get in touch with our Ask Annie Help Desk and we'll do our best to provide what you need.



[CONTACT US](#)



To

[HAUC Contact](#)

Cc

Subject

Website Enquiry

HAUC^{UK}

About ▾

Resources ▾

FAQs

News

Vacancy Hub

Filter by category ▾

27.03.2025

Street Works Team Leader

National Grid - Location Castle Donington

[LEARN MORE](#)

Legislation & Codes of Practice

Documents

Diversions Works Calculator

Lane Rental Scheme

Vacancy Hub

About ▾

Resources ▾

FAQs

News & Events ▾

Innovation Hub

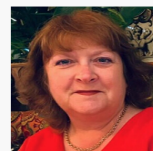
Contact ▾

National Contacts

We provide a direct communication channel for our national stakeholders. For national matters and broader organisational enquiries, please contact us using the enquiry form below.

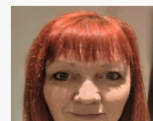
National

Regional



Julie Payne (HAUC(UK) Communications Manager)

Having spent many years in the street works industry I am proud to continue to serve the wider street works community as the HAUC(UK) communications manager. I will be pleased to assist with any enquiries you may have. If you would like to get in contact with me please use the webform below and I will respond to you as soon as possible.



Annie Bennett (HAUC(UK) Community Support Assistant)

In my previous role as Traffic Management Assistant in the Street works team at Gloucestershire County Council, I have gained an in depth knowledge of the issues relating to street works. Please do not hesitate to contact me if I can be of assistance regarding any issue relating to HAUC(UK) and the wider street works community.

SECTION

The TfL lane rental scheme (TLRS)

The TLRS is designed to control the carrying out of specified works in specified traffic-sensitive locations by applying a daily charge for each day that the street is occupied by the works. The daily charge will however be disapplied or reduced if the works take place outside traffic sensitive times

LINKS

[TLRS](#)

[Funding](#)



SECTION

Surrey Lane Rental Scheme

Surrey has some of the busiest roads in the country. As the Highway Authority for the county, one of our key aims is to cut congestion and minimise disruption for road users. We do this by working closely with our partners to plan and co-ordinate works. We commenced the SLRS on 1 April 2021 following Department for Transport (DfT) approval. By charging for lane closures and road closures on the busiest roads at peak times, the SLRS acts as an incentive to schedule works at less busy times of the day and keep traffic moving.

LINKS

[Surrey](#)

[Funding](#)



SECTION

Kent Lane Rental Scheme

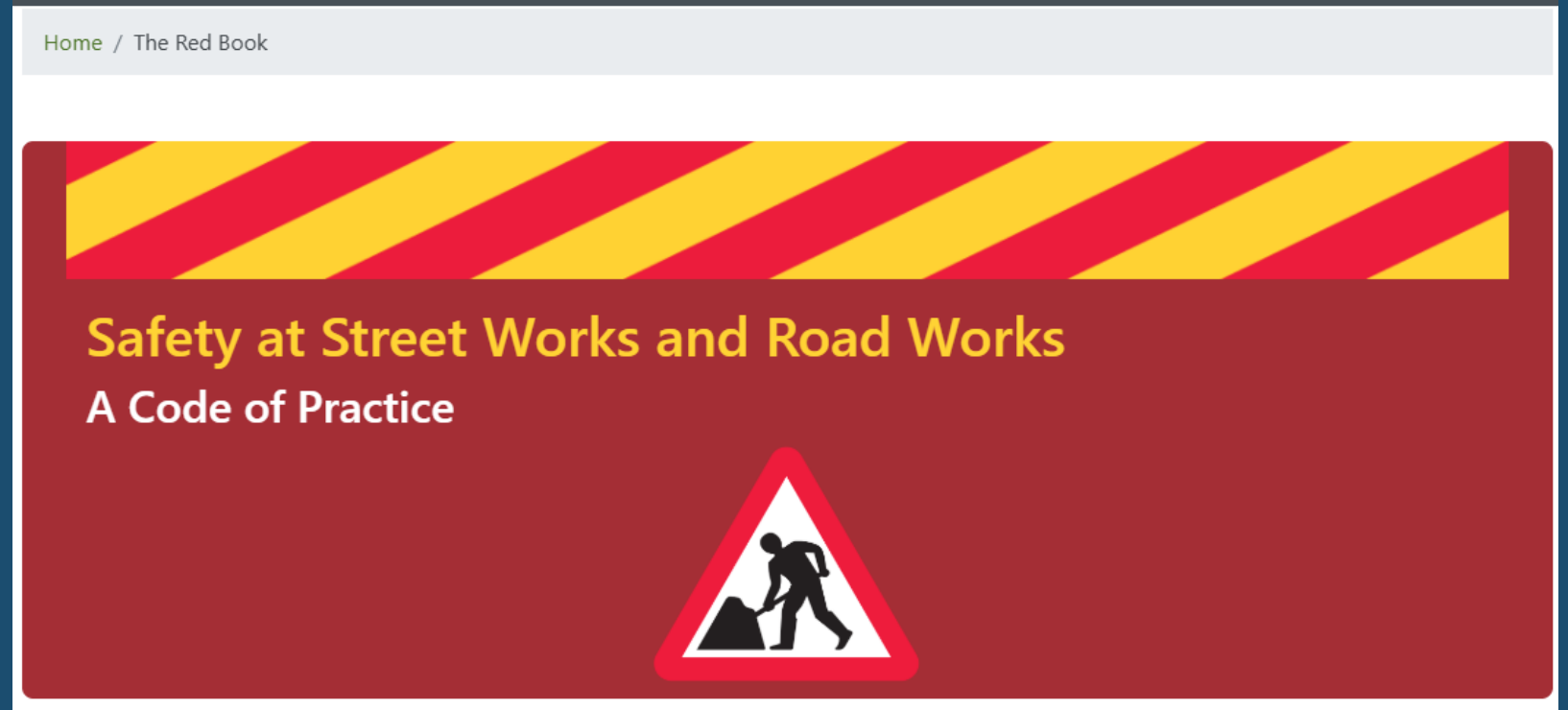
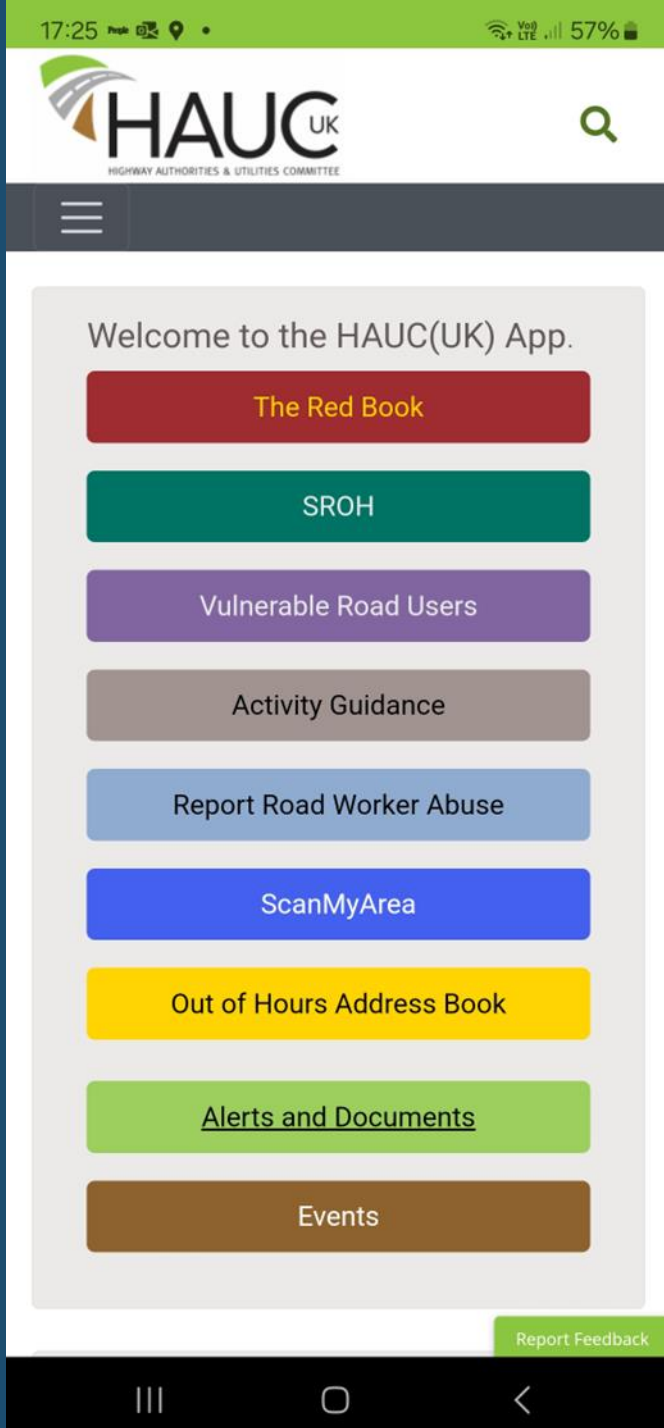
The Kent Lane Rental Scheme gives companies who need to close a road or lane to complete highway works a financial incentive to make sure it is carried out in a less disruptive way

LINKS

[Kent](#)

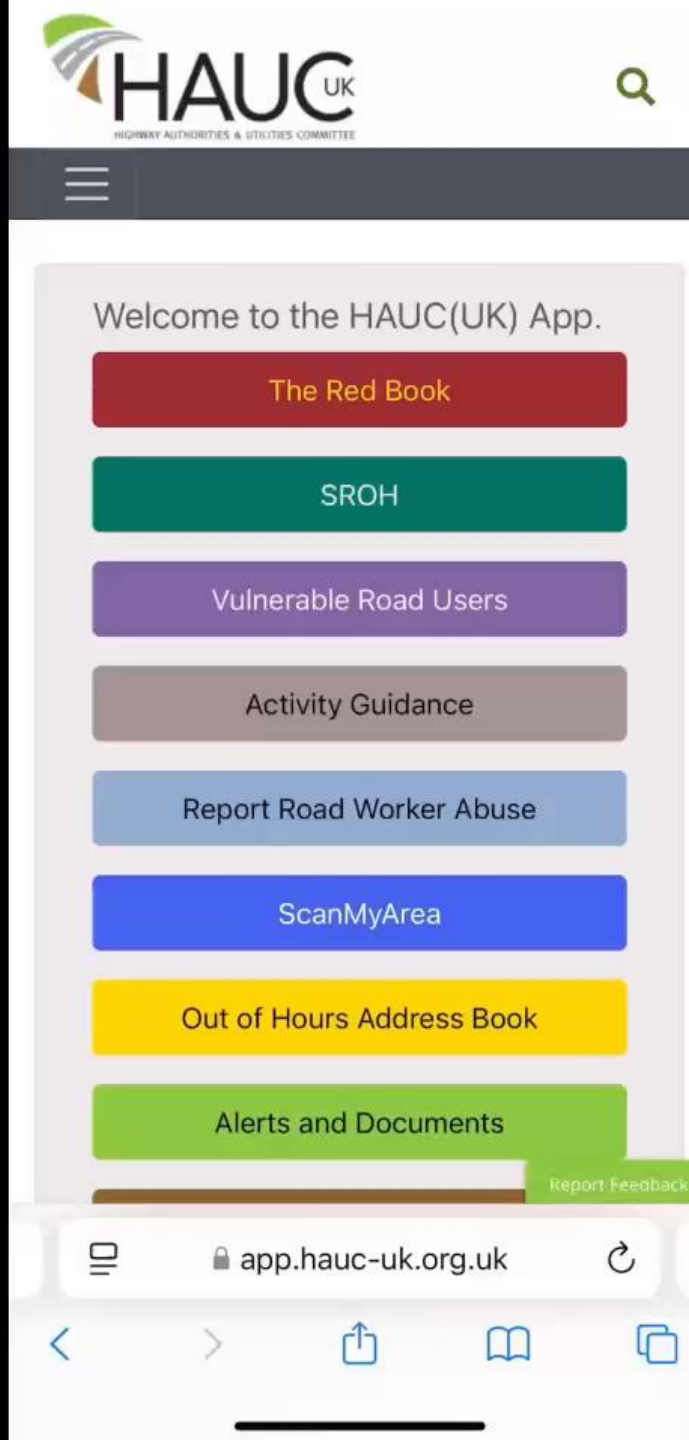
[Funding](#)





<https://app.hauc-uk.org.uk/>

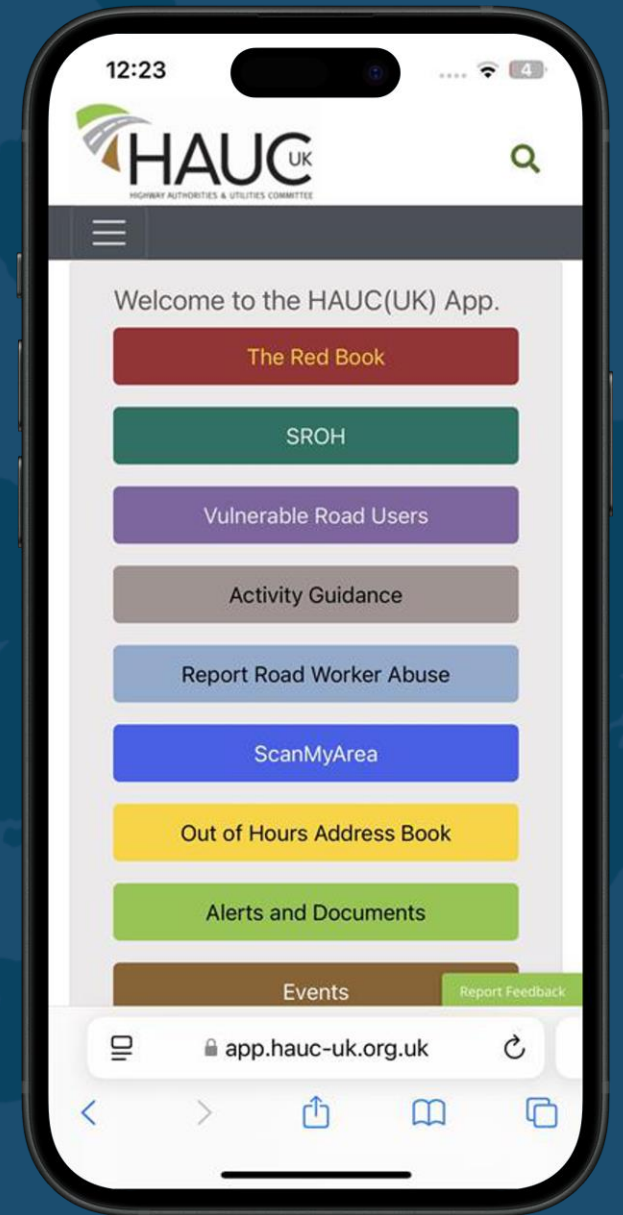
Hazel Kamuriwo –
Product Manager at Geoplace



Coming soon!

- **A new mobile app** – launching shortly on the Apple Store
- **A weather notification tool** – powered by the Met Office API, delivering critical weather alerts specific to your area
- **An AI-powered assistant** – to support users with The Red Book and SROH guidance

Stay tuned—exciting things are on the way!



Evolution of the National Street Gazetteer (NSG)

Facilitating decision-making in streetworks

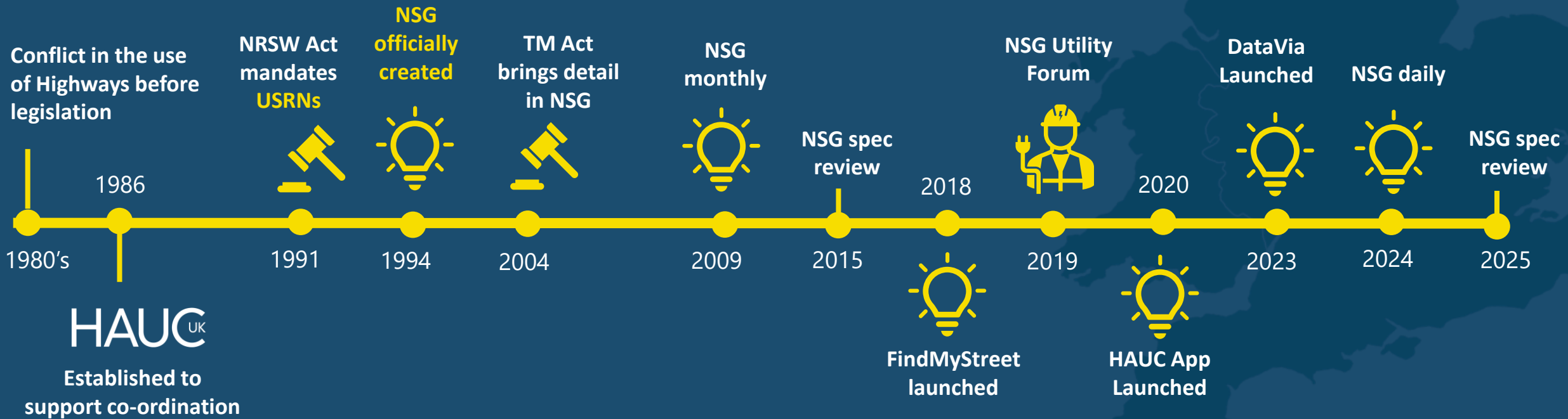
tamsin.fulton@geoplace.co.uk

Contents

- Evolution of the NSG
- DataVia NSG via API
- What's next for the NSG?

Evolution of the National Street Gazetteer (NSG)

Facilitating decision-making throughout the life-cycle of streetworks





How might the NSG better support your work?

Come and let us know – GeoPlace Stand 15



USRN
22700162

Perry Rd, Blackwall Tunnel, Northern Approach, London

- Maintainable at public expense
- ▲ TFL Red Route: Lane Rental £1,000

Category	From	To
 TRAFFIC SENSITIVE STREET Greater than 500 vehicles per hour per lane and within 100m of a critical junction.	537397, 183372	537824, 183068
 SPECIAL ENGINEERING DIFFICULTY Non-standard lamp column root design contact TFL Electrical manager 0207 9604049	537510, 183326	537510, 183326



- NSG Via API
- Updated daily
- Easily integrated

Come and see a demo of DataVia at **Stand 15**
Sign-up for a free trial today

What's next for the National Street Gazetteer?



We are working on;

- Greater alignment between NSG & OS MM Highways
- Bringing the DataVia API into the DfT StreetManager
- Data quality through a spec review with Local Authorities and Utilities
- Enhanced data to support decision-making for Lane Rental Schemes & Traffic Sensitive Networks etc.

We are preparing:

- DataVia as the definitive source of all street-related data, adding data sets like HS2, TROs and NUAR
- In consultation with the sector, we are planning to retire the CSV Download service in 2026



Thank you

Come and see us at **Stand 15**
Or email tamsin.fulton@geoplace.co.uk